



George Hopkins, Revelstoke, winner of CBT's 2009 Photo Contest.

*The Columbia Basin means home sweet home to me.  
I want to live here for the rest of my life.*



## A Year of Taking Action

# Message From the Chair and CEO

For Columbia Basin Trust (CBT), 2009/10 was a year of action in supporting people and communities in the Canadian portion of the Columbia Basin (Basin), and a year of solid returns on investments. CBT was able to increase its financial commitment to residents over the previous year, disbursing \$10.9 million in direct funding benefits.

CBT continues to engage with residents and communities in an ongoing dialogue to address Basin priorities, and to ensure that together we are meeting needs and are responsive to opportunities in the most meaningful way. Our theme "taking action" reflects CBT's role in helping to bring people, governments and communities together; encouraging collaboration and partnerships; working with groups to access funding, information and expertise through our staff, advisory committees and partners; and identifying and translating their priorities into action.

businesses, generated an annual return of 8.29 per cent, exceeding our 8 per cent benchmark. Our investments in Power Projects earned an annual return of 7.69 per cent, below our long-term target of 8 per cent, but significantly stronger than the 6.90 per cent return earned in 2008/09. Our annual return from Market Securities was very strong at 21 per cent, significantly higher than our target of 6 per cent; the unrealized losses that were incurred last fiscal were fully recovered in 2009/10.

### HIGHLIGHTS

One of the major areas of focus for CBT this past year has been delivering on our economic mandate. We have completed an Economic Initiatives Strategic Plan (2010-2012), which will work toward a region where local and regional economic well-being is actively fostered and the economy is diverse, resilient and energized. This spring, CBT quickly responded to the economic realities in the region by launch-

well as from literacy initiatives across the region.

In an effort to deliver on our vision for the long-term and enduring stewardship of the Basin's natural assets, as well as ensure sufficient ability to take action to meet environmental challenges, CBT has been moving forward on its Environmental Strategic Plan (2009-2012). Of particular note this year, CBT supported community efforts to conserve the Valhalla Mile and Slokan Island.

The Regional Districts of Kootenay Boundary, Central Kootenay and East Kootenay received a Community Excellence Award from the Union of British Columbia Municipalities for the Carbon Neutral Kootenays Project. CBT partnered with the Regional Districts on this project, which is helping local governments reduce their corporate emissions and become carbon neutral by 2012. Our Communities Adapting to Climate Change initiative is in its second year, working with communities to increase their resiliency by identifying and preparing for potential local impacts of climate change, such as increased threat of wildfires or floods. CBT also kicked off a Water Smart initiative in partnership with 19 local governments with a goal to reduce water consumption in the Basin by 20 per cent by 2015.

CBT has been taking an active role in youth engagement, giving youth a voice in the region and supporting the efforts of communities to become more youth-friendly. An evaluation of this long-running area of CBT began this fiscal year, and although it will continue into 2010/11, early outcomes have helped to clarify and reinforce the importance of working with the entire community when addressing youth issues.

### FUTURE OUTLOOK

The Waneta Expansion Project continues to be the single most significant investment decision facing CBT. In November 2009, CBT and our partner Columbia Power Corporation (CPC) announced the project would not be proceeding as originally planned. However, CBT management has remained actively engaged with CPC in exploring viable business models that will



Garry Merkel, CBT Board Chair

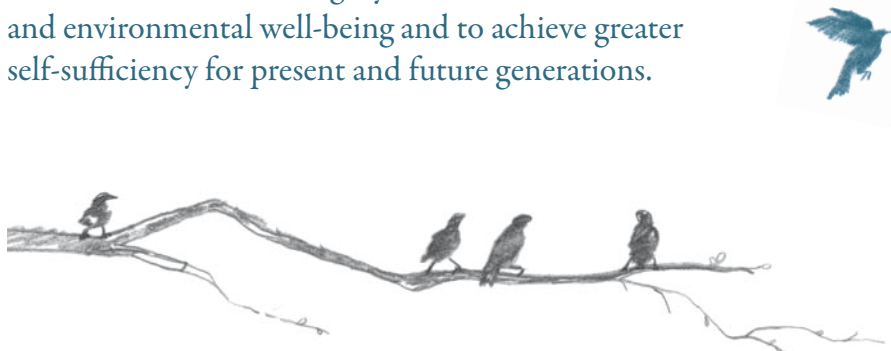


Neil Muth, CBT President and CEO

**2009/10 was a year of action in supporting people and communities in the Columbia Basin, and a year of solid returns on investments.**

### Our Mission

Columbia Basin Trust supports efforts by the people of the Basin to create a legacy of social, economic and environmental well-being and to achieve greater self-sufficiency for present and future generations.



### PERFORMANCE RESULTS

CBT's strong financial performance in 2009/10 resulted in total revenue increasing to \$26.1 million, up from \$24.1 million in 2008/09 and \$1.8 million ahead of budgeted amounts. Our corporate operating expenses (net of recoveries), which were slightly below budget, came in at 18 per cent of revenues, ahead of the 20 per cent target.

Our Private Placements portfolio, which consists of real estate investments primarily in seniors' care facilities and loans to Basin-based

ing Summer Works, a wage subsidy program for small businesses to hire students, which created over 100 jobs this summer.

Over the past year, CBT has made considerable progress in implementing its Social Strategic Plan (2009-2011). We have continued to assist communities in addressing affordable housing issues, and in particular to explore opportunities to support new housing initiatives. We have also had positive outcomes from our partnerships supporting the non-profit sector, as

allow the project to move forward.

Although there is some optimism that the worst of the market breakdown has passed, CBT's long-term investment strategy remains unchanged. We will continue to monitor market events and ensure they are given due consideration when making investment decisions. We will also continue to focus on building relationships throughout the Basin, providing mutual benefits to Basin businesses and our investment portfolio.

In the past year we have been improving the management of our Corporate Operations and creating a solid foundation, which puts us in a better position this year, more than any other year to date, to take action and, more importantly, to help communities take action. CBT has also begun a process to renew its areas of strategic focus with input from Basin residents, and we look forward to finalizing three-to five-year strategic priorities this year.

### ACKNOWLEDGEMENTS

CBT's achievements are a testament to the contributions of our dedicated partners, advisory committees, staff and Board members, who help us take action on strengthening our communities. CBT would specifically like to thank Jeannette Townsend, Evelyn Cutts and Loni Parker, who served on our Board of Directors. As a founding member, Jeannette's history with CBT precedes CBT itself. Her passion and dedication to this organization, and to the people of this region, have helped create a lasting legacy in the Basin. As long-time Board members, Evelyn and Loni have also left a part of themselves in their many contributions to CBT and the region.

Steve Crowe, Golden

*Columbia Basin to me means combining mountains, water, friends and outdoor fun for the best kind of life.*

## Shaping Our Future Together

**Take Action, Build Partnerships, Strengthen Communities**


This year CBT is hosting a Basin-wide symposium in Revelstoke on October 22-24. It's an opportunity for residents to collectively look toward the future of the Columbia Basin, while also discussing and addressing some of today's key issues. Learn more about the event and how to register

[@cbt.org/2010Symposium](http://cbt.org/2010Symposium)



### Meaningful Input From Folks Like You

CBT has three core advisory committees in the mandated areas of social, economic and environment, made up of Basin residents, that provide advice to CBT on delivering benefits to the region, and two advisory committees that provide advice on youth and water initiatives. These committees are one mechanism for input into the Delivery of Benefits decision-making process.

 [Learn more about our advisory committees and how you can get involved, visit \[cbt.org/committees\]\(http://cbt.org/committees\).](http://cbt.org/committees)



#### REVITALIZING A VILLAGE

CBT has supported the Valemount downtown revitalization project with a total of \$251,000 over three years through the locally delivered Community Initiatives Program and Affected Areas Program (CIP/AAP). With the revitalization project complete, the Village hopes to change its industrial image to a mountain resort community with a mixed and diversified economy. CIP/AAP are two of CBT's largest and longest-running programs. This year CBT supported communities with \$3.3 million.



Columbia Basin Trust (CBT) and Columbia Power Corporation (CPC) were major supporters of the Brilliant Suspension Bridge Restoration Project in Castlegar through the donation of land to the Regional District of Central Kootenay. The jointly owned land encompassed the approaches to the bridge on either side of the Kootenay River; the donation was key to the successful completion of the restoration of the historic landmark and its re-opening to the public. CBT also provided seed capital of \$200,000 for the project, and CPC provided \$10,000 for bridge lighting.

*Pictured on the bridge, from left to right: Wally Penner, CBT VP of Community Partnerships, Gordon Zaitsoff, Director of Area J for the Regional District of Central Kootenay and Victor Jmaeff, CPC VP of Sales and Development.*

## myBasin



Whether you live in Valemount, Golden, Cranbrook, Creston, Rossland, Nakusp or any point in between, all of us share something in common. We are all located in a region known as the Columbia River Basin (Basin), but more than that, we value a way of life that is uniquely our own.

Last year, we asked residents to tell us what living in the Basin means to them. The response was overwhelming and we sifted through over 1,000 statements and photo entries. Inevitably, there were some words that just kept popping up: Beauty, Wilderness, Family, Community. Throughout all the entries, there was a familiar feeling, a common thread woven from around the Basin, which we wanted to share with you. The "wordle" on the front page of this report captures those sentiments.

We recognize there's an opportunity to build on our common ground, to create an avenue for residents from all across the Basin to connect in a virtual community where we can share photos and stories, and dialogue with each other and with CBT. Welcome to myBasin.

While still early in its formation, we hope you'll come visit us at [myBasin.ca](http://myBasin.ca) and share a photo or a thought. And if you need a little more incentive, you could win a myBasin "wordle" T-shirt.

So come and say hello.

[@myBasin.ca](http://myBasin.ca)

#### [Wor'dle]

Often referred to as "word clouds," a wordle is a graphic representation of the most frequently used words in some form of content. In this instance, it was developed based on what residents had to say about living in the Basin.

*Cover photo:* Freya Rasmussen's photo is featured on the front cover of this report. It was submitted, along with 14 other photos featured in the top banner of each page, to CBT's **Show Us Your Basin** photo contest. Entrants also shared what living in the Basin means to them.

## CBT Renewing Its Strategic Priorities

CBT sets its strategic priorities every three to four years. The priorities outline the organization's overall direction and roles in the Columbia Basin region, and help guide CBT's activities. In developing its priorities, CBT aims to reflect input provided by Basin residents to the organization.

From now until September 30, CBT will be seeking feedback from residents on the draft priorities.

The strategic priorities for 2011-2015 form part of the Columbia Basin Management Plan (CBMP). The CBMP also includes CBT's Charter, which outlines CBT's vision, mission and core values.



[View the draft strategic priorities for 2011-2015 and comment online](http://cbt.org/strategicpriorities) by visiting [cbt.org/strategicpriorities](http://cbt.org/strategicpriorities), or by contacting CBT at 1.800.505.8998.



Helmut Kron, Fernie

*Amazing scenery and recreational opportunities.*

# Helping Communities Take Action

## REGIONAL VISITOR GATEWAY

The Nelson Chamber of Commerce is undertaking a landmark project for Nelson by restoring the CPR Station (photo below), which will function as a new Visitor Gateway and be an anchor for the revitalization of the entire western end of Baker Street. CBT is proud to provide \$300,000 to support this project as it is not only restoring a historic landmark, but is providing lasting economic benefits to residents and businesses. The development of the Regional Visitor Gateway dovetails with a city-wide development plan to enhance Nelson's waterfront, create a pedestrian corridor to the downtown business centre and revitalize industrial areas.



## NAKUSP TRAINING CENTRE

CBT is providing the Village of Nakusp with \$290,000 for a Regional Training Centre for emergency services, which fills a regional need for community-based training, as well as enhances the well-being of Nakusp and surrounding communities.

*Photo: Paul Peterson, CBT Board Director, Karen Hamling, Mayor of Nakusp and Neil Muth, CBT President and CEO.*

“We couldn't have done this without CBT's support and the volunteer support of the Revelstoke Community. We hope all residents of Revelstoke will be able to take ownership of this facility in the future.”

KEVIN BOLLEFER,  
BOARD MEMBER OF THE REVELSTOKE NORDIC SKI CLUB.



## BOOSTING TOURISM IN REVELSTOKE

This past year CBT supported two projects in Revelstoke that are helping the community build its winter tourism recreation industry. The Revelstoke Snowmobile Club's Boulder Mountain Cabin project received \$100,000 for a two-storey, timber frame day-use cabin and the Revelstoke Nordic Ski Club received \$75,000 for the construction of a 1,000 square foot day lodge at Mount MacPherson.

“Both of these projects are exciting for residents and we are happy to support Revelstoke in continuing to build a strong winter recreation industry.”

LYNDA LAFLEUR,  
CBT COMMUNITY LIAISON.

*Above: A rendering of the Revelstoke Nordic Ski Club's Mount MacPherson day lodge.*

“The community is excited about the significance of restoring the CP Rail station, adding another piece to Nelson's cultural diversity. Tourism opportunities will be maximized by developing a Regional Visitor Gateway.”

CAL RENWICK, NELSON AND DISTRICT CHAMBER OF COMMERCE PRESIDENT





Brad Smiley, Cranbrook

*The Columbia Basin means a beautiful, fun and exciting place to raise a family.*

# Taking Action on Water Issues


CBT is partnering with 17 municipalities and two regional districts on the Columbia Basin Water Smart Initiative to address water conservation in the region. The initiative aims to reduce community water use across the Basin by 20 per cent by 2015. With one-on-one technical support from a Water Smart Team, communities will develop, implement and monitor local action plans that will contribute to the overall Basin-wide target. CBT is committed to working with



*Above:* Dee Conklin, Chair of the Regional District of East Kootenay and Mayor of Radium signs the Water Smart Charter in Cranbrook. Also in photo is Garry Merkel, CBT Board Chair.

Basin residents to improve their understanding of and involvement in water issues. Water Smart is one of several water initiatives funded and delivered by CBT.

“The importance and need for water conservation in the Basin has been identified as a priority by local governments,” said Kindy Gosal, CBT Director, Water and Environment.

 To learn more visit [cbt.org/watersmart](http://cbt.org/watersmart)

## 490

LITRES OF WATER

*per day is used by the average person in BC; the Canadian average is 330 litres per day*  
[livingwatersmart.ca](http://livingwatersmart.ca)

## 20%

BASIN-WIDE GOAL

*to reduce domestic water consumption by 2015*

“I believe that partnering with CBT on this initiative demonstrates the Town of Golden’s commitment to water conservation. I am especially looking forward to the education tools that will support us in our efforts to encourage our residents to see the need for changed behaviour when it comes to domestic water use.”

CHRISTINA BENTY, MAYOR OF GOLDEN

## Measure, Act, Lead

In year one of a multi-year effort to reduce local government emissions, regional districts and municipalities have completed an inventory of their emissions and developed action plans that will help them become carbon neutral by 2012. Moving into the second year of Carbon Neutral Kootenays, the initiative will focus on action plan implementation and collective regional action for local government corporate emissions to increase efficiencies, reduce emissions and reach identified targets.

An approach to mitigation at this level and scale is unique, as it covers 29 Kootenay municipalities, five First Nation communities and three regional districts.



**Where does all this work come from?**

The Carbon Neutral Kootenays Strategy - [cbt.org/carboneutralkootenays](http://cbt.org/carboneutralkootenays)



## UBCM AWARD

The Regional Districts of Central Kootenay, East Kootenay and Kootenay Boundary received a Union of British Columbia Municipalities Community Excellence Award for the Carbon Neutral Kootenays Project.

*Above:* Gary Wright, RDCK Chair, recognizes CBT’s partnership in the Carbon Neutral Kootenay Project by thanking Neil Muth, CBT President and CEO.



*Photo:* Representatives from the 19 local governments that signed CBT’s Water Smart Charter.

*It means home. A place where I can always count on the sun to shine, the people to smile and the wildlife to perform. It's a little piece of heaven on earth.*

# Addressing Regional and Local Issues

## Energizing the Basin Economy

CBT is actively working towards a long-term vision for the future of the region where local and regional economic well-being is actively fostered and the economy is diverse, resilient and energized.

Working in collaboration and in partnership with Basin organizations to achieve success in this strategic area, CBT aims to build on the assets of Basin organizations and deliver programs and initiatives in partnership with those organizations having similar economic goals or interests.

Through CBT's Economic Initiatives Strategic Plan, CBT will work towards the economy of tomorrow, but will also be responsive to the changing economic landscape of today.

"Because the strategy is in place, we were able to take action on a current market need and help strengthen the economic well-being of the Basin through our Summer Works program, which created over 100 jobs this

summer," said Lisa Erven, CBT Manager, Planning and Development.

In addition to its Economic Initiatives Strategy, CBT incorporates economic considerations and supports proactive economic activities through its Community Development Program, Community Initiatives and Affected Areas Programs, Training Fee Support Program (see page 11) and Basin Business Advisors Program.

CBT continues to provide businesses with support through its Basin Business Advisors Program, formally known as the Basin Business Advocates Program, which is delivered by Steele O'Neil and Associates. This program assists established small- and medium-sized independent business operators by providing free one-to-one confidential business counselling and assessment services, and by arranging and cost-sharing specialized consulting services if recommended by the program staff. The total number of businesses that have accessed the program since it began in 2000 is 1,081.

"Funding through the Summer Works Program has allowed us to hire a student through the summer to assist with creating patient education and business development materials. In addition, we now have the opportunity to determine the needs of a potential new staffing position for the fall. None of this would be possible without the support of CBT."

SUZANNE THOMPSON, KOOTENAY FAMILY THERAPY.



### SUMMER WORKS PROGRAM

CBT launched the 2010 Summer Works Program, a Basin-wide wage subsidy pilot program for small business and social enterprise, which is delivered by the College of the Rockies. By providing up to eight dollars an hour in wage subsidies, CBT has helped to create more than 100 summer student jobs in the region. Implemented to ease tough economic times, the subsidies will assist businesses with increased staff during a time when resources are tight, as well as provide local summer employment opportunities for students.

*Above:* In order to support expanding activities in its Economic Initiatives, CBT welcomed Lisa Erven (right) to its team in September as Manager, Planning and Development. Erven met with Suzanne Thompson and Joy Friesen from Kootenay Family Therapy in Cranbrook in May to congratulate them on participating in the 2010 Summer Works Program.



*Photo:* Artist's rendering of the main lobby of Kimberley's Convention Centre.

*Inset:* Construction on Kimberley's Convention Centre began with shovels in the ground in October, 2009.



### KIMBERLEY CONVENTION CENTRE

CBT is providing \$300,000 for the construction of Kimberley's new conference facilities, expected to be complete in the fall of 2010. The project will have a positive impact in the community and the region, providing long-term economic benefits to residents and businesses, as well as complement the existing tourism market. The City of Kimberley has brought the community together in the face of the Sullivan Mine closure, and this project joins the many others the City has successfully implemented to build the infrastructure to support its economic development strategy. The conference facility is part of their broader vision to become a North American leader in providing quality Paralympic training facilities. In early 2009, CBT provided \$57,000 to help renovate Kimberley's curling facility, making it barrier-free. The curling rink is one of six sports venues to which updates are being made in order to create North America's only one-stop training destination for athletes of four Paralympics sporting events: wheelchair curling, sledge hockey, Nordic skiing and Alpine skiing.



### Inspiring Youth About Regional Issues

Building on the success of its first Youth Water Forum in 2009, CBT is hosting another forum this fall on September 24-26, 2010. Last year over 40 youth from across the Basin discussed water issues facing their communities, increased their knowledge and took action to improve and protect water values at the local level. Three youth-led projects received grants as a result of attendance at the Forum: a riparian restoration project, a community invasive plant inventory and mapping project. Watch CBT's website this summer to register for the event or join CBT's Youth Facebook group to be notified about this and other CBT youth initiatives.

@ [cbt.org/currents](http://cbt.org/currents)  
[youthwaterforum@cbt.org](mailto:youthwaterforum@cbt.org)  
CBT Youth on facebook

*Above:* Participants travel down the Columbia River in a voyageur canoe to learn about history, geology and wildlife.

David Dudeck, Rossland

*The Columbia Basin is a land of stunning, diverse scenery and interesting communities whose residents appreciate how lucky they are. I am thankful for the opportunity to have such a high-quality lifestyle.*



Photo: Bear Aware Coordinators

### Bear Aware in Your Community

In spring 2010, CBT entered into partnership with the BC Conservation Foundation (BCCF), providing \$55,000 for one year to assist bear-proofing efforts at the community level and to increase the ability of communities to provide educational tools and information to residents that will decrease bear/human conflict. Bear Aware programs will be offered in 10 communities this year including Castlegar, Elk

Valley (Elkford and Sparwood), Fernie, Golden, Kaslo, Kimberley, Nelson, and the rural areas between Salmo, Creston and Cranbrook. CBT's other environmental programs include Environmental Initiatives Program grants that provide support to community-initiated and supported environmental projects, Land Conservation and Environmental Education. Learn more at [cbt.org/environment](http://cbt.org/environment).

### Social Enterprise: Finding ways to make non-profits sustainable

Through its partnership with the Enterprising Non-Profits Program, CBT is helping organizations explore opportunities in social enterprise and ways of making their operations more sustainable. Non-profit organizations play a vital role in our communities, offering diverse services and addressing local needs, and their sustainability is linked to the overall well-being of the Basin.



Photo: Participants at the Day of Learning held in Rossland.

In this program, "social enterprise" means a business venture operated by a non-profit and these ventures can be found throughout the Basin. Financial returns earned from social enterprise are used to offer community services, and a social enterprise can be another way the organization can meet its mission in the community.

CBT's partnership with the Enterprising Non-profits program helps Basin organizations access:

- **Grants for technical assistance** related to the development or management of a social enterprise. In the past year, nine grants were provided to Basin organizations to help them with various aspects of business planning.
- **Local workshops on social enterprise:** Workshops were recently held in Valemount, Fernie, Creston, Castlegar, Nakusp and Golden. This fall, workshops will be held in Invermere and Nelson.
- **Regional networking and information sharing:** On May 12, a day of learning on social enterprise was held in Rossland, and non-profits from the region were able to learn about different business models and share lessons learned from their own experiences of setting up or managing social enterprises.

Organizations looking for more information on social enterprise in general or about the Enterprising Non-Profit Program can contact Michele Cherot at the Greater Trail Community Skills Centre at 1.250.368.6360. Michele is available to offer direct assistance to organizations throughout the Basin.

## Affordable Housing: Taking Action

A number of issues affect the daily lives of residents of the Columbia Basin and, based on input from communities, CBT is committed to helping address the most pressing of these issues.

Affordable housing is one of these issues, and has been identified as a priority in CBT's Social Strategic Plan. Affordable housing is not exclusively a social issue; improving Basin residents' access to adequate, suitable and affordable housing provides a solid foundation for residents to secure employment, raise families and build strong communities.

This past year, CBT has supported communities in planning, developing and taking action in the area of affordable housing in the following ways:

- Partnered with the BC Non-Profit Housing Association to create the Affordable Housing Resources Program, which links communities and organizations with experienced affordable housing consultants and other communities or organizations that can share relevant experience and lessons learned.
- Partnered with BC Housing to construct approximately 114 affordable housing units for seniors and persons with disabilities in seven communities throughout the Basin. Cranbrook, Kimberley, Creston, Baynes Lake, Golden, Revelstoke and Valemount will each see projects built as a result of the partnership.
- Worked with Selkirk College and the City of Nelson to start renovating a currently unoccupied student residence into 100 new affordable housing units for students.
- Collaborated with Fraser Basin Council's Smart Planning for Communities Program in hosting two regional Affordable Housing Forums aimed at sharing information with local governments, First Nations and their partners.



Left: CBT provided \$100,000 to help Selkirk College with the planning and renovation of McCarthy Hall to create student residential housing on the Tenth Street Campus.

"One of our goals is to assist communities in dealing with affordable housing issues, and in particular to find ways to support new housing initiatives."

AIMEE AMBROSONE,  
CBT MANAGER, PLANNING  
AND DEVELOPMENT

Learn more  
[cbt.org/social](http://cbt.org/social) or email  
[housinghelp@cbt.org](mailto:housinghelp@cbt.org)

Right: Artists rendering of units being constructed in seven communities across the Basin.



Douglas Noblet, Nelson

*The Columbia Basin  
means beautiful wilderness!*

# Sharing in Basin Successes

## 15 Years of Creating a Legacy

Columbia Basin Trust (CBT) was created by the *Columbia Basin Trust Act* in 1995 to benefit the region most adversely affected by the Columbia River Treaty (CRT). The CRT, signed in 1964 between Canada and the United States, created dams that improved flood control and power production; however, the resulting reservoirs flooded sections of highly productive land and cut off access to many areas, traditional First Nations' land was lost, communities were displaced and entire fish and wildlife habitats were destroyed.

Despite the significant changes that occurred across the Columbia Basin as a result of the CRT, there was a lack of meaningful consultation with residents. In the early 1990s local governments in the Basin coordinated their efforts at the regional district and tribal council level under the Columbia River Treaty Committee to approach and negotiate with the Province. Negotiations were successful and CBT was formed. A binding agreement was also established, which resulted in the following:

- \$276 million for power project investments;
- \$45 million, which CBT used as an endowment; and
- \$2 million per year from 1996 to 2010 for operations.

CBT serves the residents of the Canadian portion of the Columbia River Basin (Basin). Working closely with people who live in the Basin, CBT assists communities in addressing their needs by:

- focusing on local priorities and issues;
- bringing people together around key issues;
- providing useful, credible, accessible information;
- encouraging collaboration and partnerships;
- seeking ongoing input from Basin residents; and,
- providing resources and funding, including external experts and funding sources.

1992-1995

The people of the Basin, supported by regional government, formed the Columbia River Treaty Committee to work together with the Province to create Columbia Basin Trust.



1995

- Columbia Basin Trust Act is signed in the Legislature.
- The Columbia Basin Trust Act creates the Columbia Basin Trust (CBT) to provide social, economic and environmental benefits to Canada's Columbia Basin region.

1996

- First office established in Nakusp.
- CBT and joint venture partner Columbia Power Corporation (CPC) purchase Brilliant Dam from Teck Cominco Ltd.



1999

- Delivery of Benefits budget is set at \$3.75 million.
- Invested in Kicking Horse Mountain Resort in Golden.
- Construction of Arrow Lakes Generating Station at Hugh Keenleyside Dam begins; comes online in 2002.

1997

- Columbia Basin Management Plan, required by the Act and created in consultation with Basin residents, is adopted by the Board of Directors.
- Hosted first Basin-wide Symposium held in Revelstoke; 250 Basin delegates review draft Columbia Basin Management Plan.
- Provided first \$500,000 to environmental projects.



1998

- Multi-year funding agreement signed with the Columbia Kootenay Cultural Alliance, CBT's arts and culture program partner.
- Partnership with Regional Districts and Ktunaxa Nation Council provides \$12.9 million over 10 years for Basin-wide Community Initiatives and Affected Areas Programs.
- First youth member appointed to a CBT Advisory Committee.

2000

- First land conservation contribution of \$350,000 for Wycliffe properties.
- Cranbrook office opens as part of a strategy to be more accessible to Basin residents.
- Basin Business Advocates Program launched Basin-wide.
- CBT and CPC held their first community day at the Arrow Lakes Generating Station.
- Created youth granting programs and supported community foundations.
- Signed a Memorandum of Understanding with the Northwest Power and Conservation Council (NWPPC), which commits CBT and the NWPPC to communicate on a regular basis, share information and pursue projects to improve fish and wildlife survival in the transboundary area.
- Contributed first \$50,000 to Magic Basin Field Trip, now called Classroom with Outdoors.

2001

- Golden office opens its doors.
- Hosted the first CBT Youth Forum, dubbed Basin Voice.
- New offices located in Castlegar in CBT's Columbia Basin Building.
- First Youth Advisory Committee formed, which held its first meeting in October.
- Partnership formed with Columbia Basin Alliance for Literacy to promote family literacy programs.
- Training Fee Support Program launched.
- \$4.2 million in benefits delivered to the Basin.



2002

- CBT moves forward with a Water Initiatives Strategy and produces a five-year plan.
- SCRATCH magazine and www.scratchonline.ca launched.
- \$4.7 million in benefits delivered to the Basin.
- Established Community Liaison position in each office.
- Christopher Swain dives into the headwaters of the Columbia River in Canal Flats to begin his swim of the entire length of the river.
- Castle Wood Village grand opening in Castlegar; CBT's first seniors' care facility investment.

2003

- Work begins on Brilliant Expansion Project; comes online in September 2007.
- Established a Water Advisory Panel: a panel of experts who provide advice and strategic leadership to CBT on water issues in the Basin.
- The Columbia Basin Trust Amendment Act 2003 refined the Columbia Basin Trust Act 1995 and changed the governance structure of CBT.
- Hosted first two-day workshop to help residents understand what climate change means for the Basin.
- Launched a revised website to better serve Basin residents.
- Honoured with an award recognizing it as a "literacy friendly" organization by Columbia Basin Alliance for Literacy.



## Join Us at Our AGM

CBT's Annual General Meeting is an opportunity for Basin residents to meet our staff and Board of Directors, as well as learn more about CBT. Join us on:  
**Friday, September 17, 2010 at 4 p.m.**  
**Fernie**

@cbt.org

1.800.505.8998

## Board of Directors

CBT's 12-member Board of Directors must be residents of the Basin. The five regional districts and the Ktunaxa Nation Council each nominate one Director and the Province nominates the other six Directors.

Garry Merkel, Chair – Kimberley  
 Greg Deck, Vice-Chair – Radium Hot Springs  
 Kim Deane – Rossland  
 Cindy Gallinger – Elkford  
 Ron Oszust – Golden  
 Bob Smith – Valemount  
 Mike Berg – Nelson  
 Denise Birdstone – Grasmere  
 Ron Miles – Cranbrook  
 Jim Miller – Creston  
 Bill Trewalla – Warfield  
 Paul Peterson – Burton

### 2004

- Rocky Mountain Village, a seniors' care facility, opens in Fernie.
- CBT hosts Social Planning Symposium.

### 2005

- \$4.3 million in benefits delivered to the Basin.
- Community Development Program launches and encourages Basin communities to identify priorities for self-sufficiency.
- 407 residents accessed the Training Fee Support Program in its first five years.
- Construction starts on two new seniors' care facilities: Crest View Village in Creston and Columbia Garden Village in Invermere, and investment begins for the expansion of Joseph Creek in Cranbrook.
- CBT welcomes new President and Chief Executive Officer Neil Muth.
- Columbia Basin Youth Grants funding program launched.
- 10-Year Anniversary Symposium and Annual General Meeting held in Cranbrook.

### 2006

- Wally Penner joins CBT as Vice President of Community Partnerships.
- Six years after launching, the Basin Business Advisors Program has provided business counselling to almost 800 businesses.

### 2007

- \$5.3 million in benefits delivered to the Basin.
- Canadian Columbia River Forum signs Memorandum of Understanding.
- Josh Smienk retires after 12 years as Chair and Founding Board member.
- Founding member Dieter Bogs retires from the Board.
- CBT announces \$2 million in increased funding and a three-year, \$10 million commitment to its Community Initiatives and Affected Areas Programs.
- CBT Symposium – Change and Sustainability in the Columbia Basin – hosted in Castlegar.
- Garry Merkel elected as Chair of the Board.
- BASINLink, CBT's email newsletter, launched.
- Garden View Village in Kimberley opens. One of CBT's seniors' care facility investments.



### 2008

- Increased Arts, Culture and Heritage Program funding increased by 50 per cent.
- Investment in Crest View Village Expansion in Creston, second expansion of Joseph Creek in Cranbrook and the Rocky Mountain Village Expansion in Fernie.
- Hosted Columbia Basin Watershed Network Symposium in Castlegar.
- Supported the Nature Conservancy of Canada with \$500,000 for the purchase and long-term stewardship of the Darkwoods property.
- Released first State of the Basin Report.

### 2009

- Delivered \$9 million in benefits to the Basin.
- CBT doubles the number of Youth Community Service Award scholarships awarded annually to 45.
- Kootenay Boundary Community Service Co-operative partnership formed to strengthen Basin non-profit community service agencies.
- Formed new partnership with Enterprising Non Profits (enp) to strengthen the sustainability of non-profits in the Basin.
- Doubled support for Columbia Basin Alliance for Literacy (CBAL) over the next three years.
- CURRENTS – first CBT Youth Water Forum – held in Golden.
- UBCM award recognizes Regional Districts for Community Excellence for Carbon Neutral Kootenays project supported by CBT.
- Mountainside Village seniors' care facility opens.



### 2010

- Celebrating 15 years with a \$15 million dollar budget; largest ever.
- 19 communities sign Water Smart Charter to reduce water use Basin-wide by 20 per cent.
- New Summer Works program launched, creating over 100 student summer jobs Basin-wide.
- Founding Board member Jeannette Townsend retires from the Board.
- Affordable Housing Resources Program launched Basin-wide to address affordable housing issues in the Basin.
- Partnership with BC Housing; CBT contributes \$425,000 to build approximately 114 affordable housing units Basin-wide for seniors and persons with disabilities.
- CBT's first seniors' care facility in Castlegar expands and holds grand re-opening.
- Lake View Village – CBT's eighth seniors' care facility investment – opens its doors.
- CBT hosting Basin-wide Symposium in Revelstoke, October 22-24.

## Founding Board Member Recognized

Founding Board member Jeannette Townsend of Valemount was honoured in March of this year upon the completion of her term; she left a legacy with CBT and her community. "The opportunity to have been involved in the creation of CBT and the legacy that it has created for the people of the Basin is something I will always regard an honour and a privilege," said Townsend.

Karen Reisle, Wilmer

Having been born in Invermere, the Columbia Basin is my home. It is a place of amazing beauty just about everywhere you look. Beyond the beauty, it is a place full of life and growth that needs to be respected and cared for in order to be home for future generations.

## Shaping Our Future

### Planning for the Future in Communities

Last year in Report to Residents, CBT announced that we would be supporting three community projects that would use indicators and other information to support a planning process that could then become a model for similar future planning for other communities in the Basin through our State of the Basin Initiative.

This initiative was launched in response to a demand for accurate, meaningful, Basin-specific information that would allow for evidence-based strategic planning and decision-making for communities. All three projects are expected to be complete by the fall of 2010.

"CBT is pleased with the progress of the three projects. Each has taken action to develop and use information as a foundation for their planning, and have been engaging residents in their communities along the way," said Sabrina Curtis, CBT Director, Planning and Development.

The Kaslo and District Community Forest Society is creating a long-term strategy for the stewardship of the resources surrounding Kaslo by using multiple-scenario planning and incorporating community values. The community has contributed to developing and choosing a likely 50-year scenario to base planning on and the draft plan has been presented to the community.

The Rossland Strategic Sustainability Commission is developing a comprehensive indicator-based monitoring program to support its ongoing planning and to track progress toward local sustainability goals. Community members provided input through public meetings.

The East Kootenay Integrated Lake Management Partnership is contributing to sustainable foreshore land use decisions on Columbia Lake that will account for cumulative impacts to sensitive habitats and engage the public in the process. A full plan will be presented at a public meeting.

Learn more @ [cbt.org/soth](http://cbt.org/soth)

## Youth – Past, Present and Future Leaders in the Basin

Young people are a part of the legacy of social, environmental and economic well-being for the Columbia Basin. That's why, since its inception, CBT has taken an active role in developing opportunities for young people in the Basin. We do this by investing in projects and ideas brought forward by youth 15-29 years old through the Columbia Basin Youth Grants (CBYG), and we encourage youth engagement through a variety of programs and initiatives.



Michelle d'Entremont, CBT Basin Youth Liaison

"From its earliest days CBT has seen its support of, and engagement with, the youth of the Basin as an important aspect of its efforts," said Wayne Lundeberg, CBT Manager, Youth Initiatives. "In particular, we've ensured that youth has a meaningful voice through our advisory committee and events such as the Basin-wide Youth Forum."

The Youth Initiatives Strategic Priorities are currently under review and will include community consultations throughout the Basin in the coming year.

### COLUMBIA BASIN YOUTH GRANTS

To support a key youth initiative and guiding principle of building youth capacity and leadership, Michelle d'Entremont, CBT, Basin Youth Liaison, works with applicants of the CBYG through the application process. Not only to ensure a quality application, but to mentor youth applicants in acquiring grant-writing and project management skills.

"Youth Initiatives really has a dual mandate: to provide grants and to build capacity," said d'Entremont. "And the grants are not just about the project or idea, but about the process and what the youth would gain from the experience. This speaks to everything we do in Youth Initiatives, where the process is just as important as the end product." (See Sharing Wisdom below, which received a \$2,500 grant from CBYG.)

Learn more @ [cbt.org/cbyg](http://cbt.org/cbyg) [cbt.org/youth](http://cbt.org/youth)



Above: CBT Youth Initiatives Program Manager Wayne Lundeberg and members of the YAC at a meeting in the Slocan Valley.

### YOUTH INPUT TO CBT

The Youth Advisory Committee (YAC) evaluates and selects projects for CBT's Youth Grants program. This committee also guides the strategic action for CBT Youth Initiatives and provides a youth perspective to CBT policy.

@ [scratchonline.ca/aboutus](http://scratchonline.ca/aboutus)

CBT believes in taking an active role in developing opportunities for young people in the Basin, working with communities across the Basin to support an active youth culture.

## Sharing Wisdom

The Wild Warriors, a group of Aboriginal students at Mount Baker Senior Secondary School (MBSS) in Cranbrook, are helping Aboriginal students feel more confident, empowered and connected to their culture through an innovative high school program dubbed Sharing Wisdom.

"The greatest success of this project is the relationship between the Elders and the youth. Second to that are the relationships with Elders and staff and the authentic voice and advocacy for Aboriginal students that



Above: A participating Elder, Leo Williams, sits down with student, Jordan Johnstone, as part of the Sharing Wisdom project.

Elders bring to the school," said Debbie McPhee, an Aboriginal Education Support Worker at the school.

The Elders have become an integral part of the Aboriginal Education program, bringing information and wisdom to the students about their cultures, traditions and languages. In addition, the Elders regularly participate in other classes such as photography and social studies, and are accessible to youth through their own classroom.

"Having the Elders at our school

means a lot to me. They are always there when we need them and they always want to help us out," said Paetonn MacPherson, a grade 12 student.

McPhee said they are receiving requests from other communities about this project and she hopes it becomes a great example of the positive contribution Elders can make to the public education system. This project was funded by MBSS, School District 5, Columbia Basin Trust and the Vancouver Foundation.

Bill Usher, Golden

*I feel so connected to a past that I am learning about and a future I wish to be part of. Every day we can watch the flow of life in the wetlands from our home on the bench above.*



## Summer Reading

Pick up this special 2010 Summer Reading Edition of SCRATCH Magazine. It showcases the stories of the ten finalists in CBT's Youth Writing Challenge. Vote for your favourite short story.

@scratchonline.ca/vote



Photo: Monica Nissen, Wildsight's Education Program Manager, leading a Classroom with Outdoors trip in a forest ecosystem.

## Collaboration Fosters Business

Thanks in part to a \$100,000 contribution from CBT, the Community Futures Development Corporation of Greater Trail (CFDC) is starting up a business incubator in downtown Trail. The South Kootenay Business Centre will provide small, entrepreneurial businesses with affordable office space, shared support and business development services to help new firms succeed at a time when they are most financially vulnerable. This project will fill a current gap in the local opportunities available for entrepreneurs.

"CBT is actively working to foster the economy of the Basin and it is only possible through collaborative efforts such as this one with CFDC and other partners that share similar economic goals and objectives and have complementary strengths," said Neil Muth, CBT President and CEO. "By contributing to the new centre we hope to inspire innovation."

The business space will be connected to Trail's high-capacity fibre optics network, an essential tool in enhancing successful high-tech industry start-ups, and will also give entrepreneurs access to on-site video conferencing, meeting rooms, modern computer labs and a business library.

"Although small business accounts for 98 per cent of all business in the province and 52 per cent of all jobs, no governments or organizations are obligated to foster business to the extent of a business incubator model," said Ian McAlpine, Chair of the Greater Trail CFDC.

For more information @ [communityfutures.com](http://communityfutures.com) [cbt.org/economic](http://cbt.org/economic)

Below: From left to right, CFDC Greater Trail Chair Ian McAlpine, CBT Board Member Bill Trehwella, CBT Community Liaison Wayne Lundeborg and CFDC Trail Manager Craig Adams.



# Education is Essential

**Training and access to education is essential** to the economic and social well-being of a community. CBT has a number of programs that create opportunities in both training and education that help residents adapt to economic changes and enhance the quality of life in the Basin.

### TRAINING FEE SUPPORT PROGRAM

CBT's Training Fee Support program, a bursary-style program that promotes access to education and training for residents, received a \$95,000 boost this past year to support the increase in program demands. This increase to the program was in recognition of this past year's economic and labour challenges, faced by many residents and communities in the Basin. Residents can access up to \$800 to help pay tuition or course fees for short-term training and for education essential to securing employment. This year over 760 training bursaries were provided to residents.

### EDUCATION IN THE WILD PROGRAM

CBT is a founding and continuing supporter of a series of school-based ecosystem awareness programs, delivered by Wildsight, which support teachers to provide hands-on, outdoor learning opportunities for students. Since 2000, the Classroom with Outdoors, Winter Wonder and Go Wild programs have helped 32,000 students learn about ecosystems as they visited wetlands, grasslands and forests.

### ENVIRONMENTAL EDUCATION PROFESSIONAL DEVELOPMENT BURSARY PROGRAM

Aimed at building the capacity of Columbia Basin educators to foster regional stewardship through environmental education, environmental educators receive up to \$500 to attend workshops and conferences that augment their teaching skills. This program is delivered in partnership with the Columbia Basin Environmental Education Network (CBEEN), a network for environmental education professionals that encourages environmental stewardship and sustainability in the Canadian Columbia Basin by supporting environmental education initiatives.

### COMMUNITY SERVICE AWARDS

The Community Service Awards assist Basin residents in pursuing post-secondary education and reward and encourage volunteerism. These awards are based on volunteer service, not on academic achievement.

Twenty-two awards valued at \$2,000 each are available for ten students attending Selkirk College, ten for the College of the Rockies, one for Revelstoke Centre of the Okanagan College and one for Valemount Campus of the College of New Caledonia.

Forty-five awards valued at \$2,000 each are available to grade 12 graduates in the Basin for the first year of post-secondary education or training.

*"I have a family to take care of while maintaining my grades. All of this work means nothing if I cannot pay both the bills and my tuition – and this is where the CBT award has helped me to bridge the gap. The award is specifically geared for mature students and it is one of the few available for individuals returning to school in this region."*

DAVID MAC MANN, CASTLEGAR, RECIPIENT OF THE COLLEGE COMMUNITY SERVICE AWARD



Brian d'Eon, Nelson

*For me the Columbia Basin represents a unique and magnificent interface between the land and the heart-wrenching beauty of the mountains and the poetry it inspires.*

## Strength in Partnerships

### Taking Action on Land Conservation

CBT provided \$138,000 to help The Nature Trust of British Columbia (TNTBC) secure Slocan Island, a 142-acre property. The parcel of land is located in the Slocan River flood plain and has several distinguishable overflow channels intersecting the productive riparian site. It comprises cottonwood forest, mixed conifer forest, wetland plant communities and valuable rainbow trout rearing areas. Waterfowl, moose, elk and Townsend's big-eared bats are also natural inhabitants.

"CBT has made a commitment to ensuring long-term stewardship of the Columbia Basin's natural assets and maintaining healthy ecosystems. Investing in this property helps CBT fulfill those ongoing commitments," said Rick Allen, CBT Program Manager, Environment.

CBT partners with the East Kootenay Conservation Program, which researches various parcels of land each year and recommends the highest priorities and best-suited projects to meet CBT's goals for the Land Conservation Strategy. Over the last 15 years, CBT has contributed \$2.8 million to land conservation efforts in the Columbia Basin.

Learn more  
[cbt.org/environment](http://cbt.org/environment)  
[ekcp.ca](http://ekcp.ca)  
[naturetrust.bc.ca](http://naturetrust.bc.ca)



#### CELEBRATING PARTNERSHIPS

Over the past 15 years, CBT has partnered with many groups who have similar goals and complementary strengths that have helped CBT identify and take action on the most important issues to residents and deliver on our broad mandate. Our work together is reflected on these pages and

*we want to say thanks!*

Below: A Slocan River back channel located on the west side of Slocan Island.

### Literacy: Families, Children, Adults, Communities

For close to ten years, Columbia Basin Trust has been proud to partner with Columbia Basin Alliance for Literacy (CBAL). In every Basin community, CBAL supports a wide variety of local literacy projects. CBAL offers diverse literacy programs, from English as a second language, to Mother Goose for early language development, to adult tutoring.

The story of CBT's partnership with CBAL is not only about supporting valuable literacy projects and programs, but is also about two partners with a common vision of how to work with communities.

"We want to support local efforts and build on what communities in the region are trying to accomplish," said Aimee Ambrosone, CBT Manager, Planning and Development. "We see that CBAL understands the importance of partnering in communities, and responding to a community's need in ways that work best for that particular community."

CBAL takes the approach of supporting local efforts by having dedicated staff members in each Basin community who help coordinate

local literacy efforts. CBAL staff work hand in hand with a local community literacy advisory committee, made up of volunteers who give advice about local literacy needs. CBAL uses the advice to ensure it supports projects and offers programs that meet those needs.

"CBAL is unique in the province for being able to provide support regionally, thereby creating equity in funding and literacy service for Basin communities of all sizes. We feel very fortunate. Our partnership with CBT has been key to that regional strength," said Ali Wassing, Executive Director of CBAL.

In delivering projects and programs, CBAL collaborates with a number of community organizations, including community colleges, school districts, non-profit societies, libraries and other community agencies.

Learn more  
[@cbal.org/social](https://www.cbt.org/social)



Photo: CBAL provides literacy development for all ages.

### Community Foundations: Assets to the Basin

CBT believes that community foundations are a valuable asset to the Basin; they encourage philanthropy and support community initiatives at a local level. For the past ten years CBT has been providing endowment support to community foundations of up to \$50,000. To date, ten community foundations have received this start-up contribution from CBT.

In 2009, CBT, in partnership with Community Foundations of Canada (CFC), started a

dialogue with Basin foundations to discuss ideas on other ways CBT may be able to assist them in remaining sustainable beyond the endowment. Various consultations between representatives of these foundations, CBT and CFC took place in communities across the Basin, and ideas that are brought forward in a report later this year will be used to determine future decisions around the increased and continued support by CBT.

Tanya Munro, TaTa Creek

*Nature, home and freedom.*



Photo: The Illecillewaet Glacier, Revelstoke.

## Preparing to Meet Future Challenges

As part of CBT's commitment to share the latest science and information about water resources with Columbia Basin residents, CBT hosted an information evening in Golden on the state of Columbia Basin Glaciers.

This free public event featured some of Canada's leading geology experts, who presented the public with current information on the effects climate change is having and may continue to have on our glaciers in this region.

CBT collaborates with leading scientists and climate change experts from across North

America to prepare credible, science-based reports that focus on the Canadian Columbia Basin, and to share those results with residents.

CBT is committed to taking action on climate change and actively engaging with people living in the Columbia Basin.

 **Call 1.800.505.8998 to receive a DVD copy of the Glaciers presentation.**

Learn more about CBT's work in the area of climate change at [cbt.org/climatechange](http://cbt.org/climatechange).

"Climate research suggests that local glaciers are already receding and will continue to do so," said Kindy Gosal, CBT Director, Water and Environment, noting that the Bull River watershed in the East Kootenay lost 60 per cent of total ice area based on a 15-year period ending in 2000. "These changes will impact people living in this region."

## Strengthening Community Service Agencies Across the Region

In a unique partnership, CBT and the Kootenay Boundary Community Services Co-operative (the Co-op) are working together to strengthen Columbia Basin community service agencies.

The Co-op was formed in 2003, with 13 non-profit organizations from the West Kootenay region as its members. The organizations work together to plan and deliver services that are regional in nature, to develop new ideas through projects and to support each other and improve the quality of services they provide.

In discussion with community service agencies working in the social sector in the Basin, CBT heard the message that agencies wanted to ensure they were strong and sustainable, and able to offer the best possible assistance to vulnerable groups and individuals in their communities.

"Community social service agencies provide a vast network of services that support people of all ages to live healthier, happier lives," said Andrew Jarrett, Executive Coordinator of the Co-op. "Through our partnership with CBT, we are strengthening the sector, and benefitting residents."

By partnering with the Co-op, CBT was

able to expand on its efforts to assist agencies throughout the entire Columbia Basin. Through the partnership, agencies in the Basin have access to local professional development opportunities for boards and staff teams, are able to explore models of service delivery that work in rural communities and have access to one-on-one support if the agency feels that it is needed.

"Through our partnership with the Co-op, in the past year, we have seen local boards have the opportunity to access training on media relations, risk management, youth engagement and financial management," said Aimee Ambrosone, CBT Manager, Planning and Development. "Those opportunities are just one example of how agencies can benefit from the partnership and access helpful information."

By working together, CBT and the Co-op are able to do more than either organization could do individually to support and strengthen the community social services sector in the Basin.

 **Learn more**  
[cbt.org/social](http://cbt.org/social)  
[thekoop.ca](http://thekoop.ca)



**ROAD TRIP – GET OUT AND ENJOY THE CULTURAL OFFERINGS OF THE BASIN**  
Explore artists' studios, museums, art galleries and heritage sites through this free, self-guided tour. Meet the artists, shop for fine art and crafts, view demonstrations, special exhibitions and interpretive displays or chat with local historians during this two-day-long cultural celebration. The Columbia Basin Culture Tour is a project of the Columbia Kootenay Cultural Alliance, which administers and manages the arts, culture and heritage program on behalf of CBT.

When: August 14 and 15, 2010, from 10 a.m. to 5 p.m. Plan your tour by visiting [cbculturetour.com](http://cbculturetour.com) or [basinculture.com](http://basinculture.com)

Above: Residents admiring artists' works during the 2009 Basin Culture Tour.



## Investing in Opportunities

### Financial Review and Forecast

**2009/10 was a positive year for CBT.** Direct funding benefits disbursed to residents over the course of the year increased to \$10.9 million and CBT has committed to \$15 million in the coming year. Additionally, despite continued uncertainty in world markets, CBT continued to experience strong financial performance with total revenues increasing to \$26.1 million from \$24.1 million in 2008/09.

Overall operating expenses increased slightly, with the majority of the increase attributable to staff remuneration and development. CBT increased staffing in two of our areas of Delivery of Benefits and all increases were budgeted for. Total capital spending during the year was \$14.5 million. Almost all of these funds were

engaged in exploring viable business models that will allow the project to move forward. Over the next year CBT will be looking to finalize the renewal of its organization-wide strategic priorities. This will guide our work in the Basin over a three- to five-year period and will assist in directing staff and financial resources. Public input and review will be sought, and will help to shape the resulting priorities.

**ANNUAL REPORT**  
CBT's Annual Report provides detailed information on our investments and report on performance as well as audited financial statements. It is available at [cbt.org/annualreport](http://cbt.org/annualreport) or call 1.800.505.8998 to request a printed copy.



**2009/10 was a positive year for CBT. Direct funding benefits disbursed increased to \$10.9 million and CBT has committed to \$15 million in the coming year. Additionally, CBT continued to experience strong financial performance with total revenues increasing to \$26.1 million up from \$24.1 million in 2008/09.**

CHRISTINE LLOYD, CBT DIRECTOR, FINANCE AND OPERATIONS

This increase in revenue was a result of increased revenues from both Power Projects and Private Placements. Income Securities experienced a decrease in revenues from 2008/09. This is due to a combination of lower balances held throughout the year, as cash is used for Delivery of Benefits commitments or corporate operating expenses, and continued decreasing interest rates.

CBT's return on Market Securities was strong at 21 per cent, and far exceeded our six per cent target. The \$2.8 million in losses that were

incurred in 2008/09 have been fully recovered. Overall operating expenses increased slightly, with the majority of the increase attributable to staff remuneration and development. CBT increased staffing in two of our areas of Delivery of Benefits and all increases were budgeted for. Total capital spending during the year was \$14.5 million. Almost all of these funds were

invested in Power Projects or Real Estate investments. The major component of the capital expenditures for Power Projects was for development activities in Waneta Expansion. All other Power Projects expenditures were for planned regular upgrades and sustaining capital expenditures. In November 2009, CBT and our partner Columbia Power Corporation (CPC) announced that the proposed Waneta Expansion project would not be proceeding as originally planned. However, CBT has remained actively

CBT's investment portfolio has generally performed well over the past year, despite a level of uncertainty in most global financial markets. 2009/10 has been a period of activity marked by investment staff focusing on building relationships with the financial community throughout the Basin and managing returns for continued Delivery of Benefits activities.

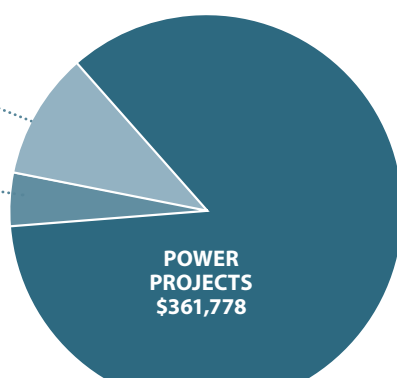
THE TOTAL OF  
CBT'S INVESTMENTS:

**436**

MILLION DOLLARS  
*This is allocated to three major categories: Power Projects, Private Placements and Market Securities.*

PRIVATE  
PLACEMENTS  
\$59,874

MARKET  
SECURITIES  
\$15,064



#### CONSOLIDATED STATEMENT OF FINANCIAL POSITION (AS AT MARCH 31, 2010) *(in thousands of dollars)*

	2010	2009
<b>Assets</b>		
Current	\$24,730	\$25,909
Investments	481,608	472,538
Other	37,330	32,112
	<b>\$543,668</b>	<b>\$530,559</b>
<b>Liabilities and Net Assets</b>		
Current	\$30,446	\$29,075
Long-term Debt	154,811	154,572
Net Assets	388,857	375,987
	<b>\$543,668</b>	<b>\$530,559</b>

#### CONSOLIDATED STATEMENT OF OPERATIONS (FOR THE YEAR ENDING MARCH 31, 2010) *(in thousands of dollars)*

	2010	2009
<b>Revenues</b>	\$26,094	\$24,117
<b>Operating Expenses</b>	5,579	4,931
	<b>\$20,515</b>	<b>\$19,186</b>
<b>Recoveries</b>	\$859	\$804
<b>Excess of Revenue over Expenses Before Other Items</b>	\$21,374	\$19,990
<b>Unrealized Gain (Loss) on Market Securities</b>	\$2,355	(\$2,758)
<b>Delivery of Benefits</b>	10,859	8,976
<b>Excess of Revenue over Expenses</b>	<b>\$12,870</b>	<b>\$8,256</b>

Heather Amero, Montrose

*Everything! My daughters love the outdoors. Camping, swimming and, first and foremost, being our "spotters" on our daily (car) rides through the beautiful back roads of OVR Columbia Basin.*

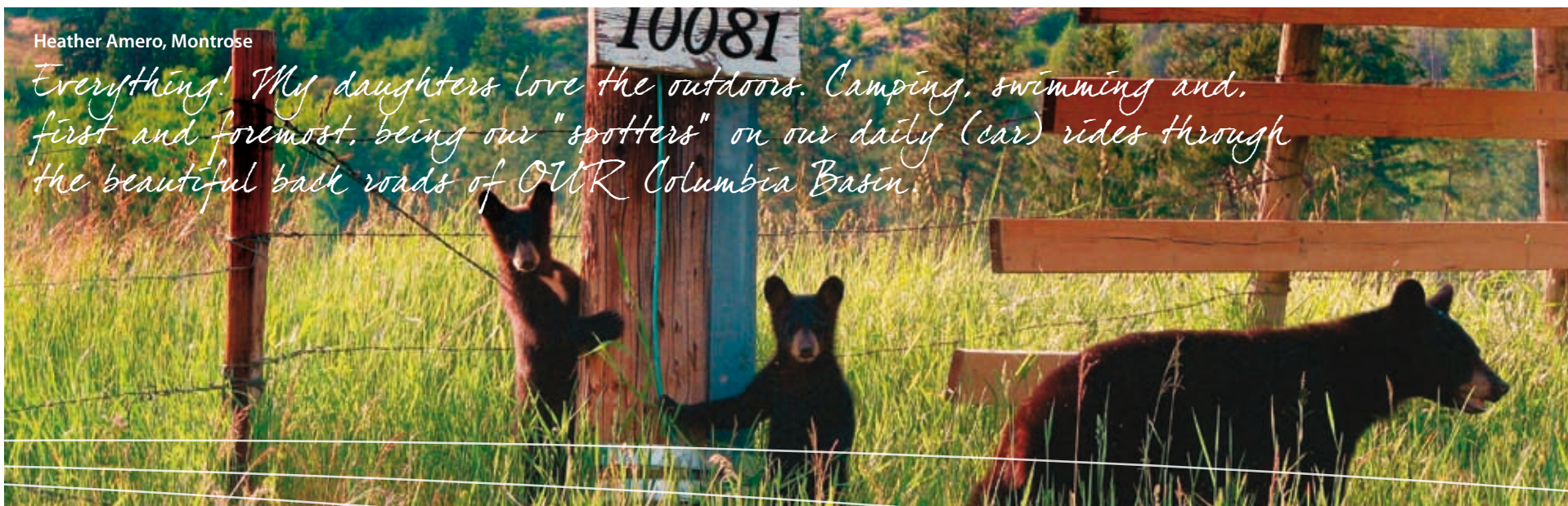


Photo: Veneto Place

**"The Veneto project received tremendous support from Columbia Basin Trust, and the community at large was instrumental in making attainable housing a priority in Fernie."**

SIMON HOWSE,  
VENETO PROPERTIES.

For more information  
@ [parastone.ca](http://parastone.ca)  
[cbt.org/investments](http://cbt.org/investments)

#### TAKING ACTION TO INVEST IN SENIORS

CBT's portfolio of seniors' care facilities remains a significant contributor to the success of our Investment Program, which supports our Delivery of Benefits activities. The 90-unit Lake View Village in Nelson is the most recent addition to the portfolio and opened in the spring of 2010. The expansion to Castle Wood Village in Castlegar was also completed this past year. The addition of 33 living suites to the existing building makes this project CBT's largest seniors' care complex in the West Kootenay, with 110 units. Providing comfortable housing options and the security of various support systems to help seniors enjoy active and independent lifestyles, these two additions increase CBT's portfolio of seniors' developments to include more than 800 living suites in eight Basin communities. All facilities are operated by our partner Golden Life Management.

## Veneto Place: Attainable Housing in Fernie

Construction is nearly complete on a condo project that used an innovative approach to bring attainable housing to Fernie. Veneto Place is a joint partnership between CBT, BC Housing, the City of Fernie, Fernie Family Housing Society (FFHS) and Veneto Place Properties Ltd. The 45-unit strata condominium complex will provide attainable rental and ownership opportunities for Fernie residents.

Originally brought forward by the developer Parastone Developments, Veneto Place addresses issues raised by an independent consultant hired by the City to review affordable housing opportunities in Fernie.

"This project is unlike any other in the province that we know of," said Johnny Strilaeff, CBT VP, Investments. "Not only is it an investment opportunity for CBT, but it also meets one of our goals in terms of addressing affordable housing issues in the Basin. This project brings to mind what our seniors' care facilities looked like ten years ago, and I hope it will be a model for similar projects in other communities moving forward."

All partners in the project are committed to making it an attainable housing project, and are aiming to sell or rent the units at 20 per cent below market value. CBT is contributing completion financing of \$4.5 million for the project, while BC Housing is providing interim construction financing of \$7 million.

"Given the amount of effort and alignment required from all parties, the commitment of

each partner was critical," added Strilaeff.

"The construction of this development is a testament to the power of partnerships," said Simon Howse, on behalf of Veneto Properties. "We need to acknowledge the efforts of our federal, provincial and municipal leaders. The Veneto project received tremendous support from Columbia Basin Trust and the community at large was instrumental in making attainable housing a priority in Fernie."

The project consists of three separate apartment-style buildings, with 15 units in each building. All buildings will contain a mix of ownership and rental properties:

- Nine units will be retained by the developer and rented through FFHS;
- 12 units will be purchased by the Province through BC Housing to be used as affordable rentals managed by FFHS; and
- 24 units will be sold to local residents at attainable pricing with permanent housing agreements registered to the title.

Says Corrie Hurlburt, Property Manager at FFHS: "The addition of the 45 units to the affordable housing stock in Fernie will go a long way to address some of the identified gaps in housing. The units provide an excellent option for local renters to transition to affordable home ownership, alleviating the potential for stagnation within the rental sector. We appreciate the outstanding work done by Parastone to successfully bring all the partners together in such a short period of time."

Adds Fernie Mayor, Cindy Corrigan: "Veneto Place is a welcome addition to the City of Fernie. Affordable housing is a key concern and this is a great first step in addressing it. Moreover, City staff and Parastone have been working toward establishing a partnership that will ensure the affordability of housing in the region in the future. Many thanks to all the partners for taking the initiative and moving forward on this project."

A show suite will be available for viewing in the summer of 2010. Contact the Fernie Family Housing Society for more information on how to qualify for Veneto Place at 1.250.423.4239.

**"We realize that excellent senior's care and housing is a growing concern for Basin communities and we believe this is a way CBT can make a tangible impact for many families."**

JOHNNY STRILAEFF, CBT VP, INVESTMENTS

@ [cbt.org/investments](http://cbt.org/investments)  
@ [goldenlifemanagement.ca](http://goldenlifemanagement.ca)

Photo: Recently completed, Lake View Village looks out over Kootenay Lake.

Inset: Residents, project partners and local officials attend the ribbon cutting ceremony for the expansion of Castle Wood Village.

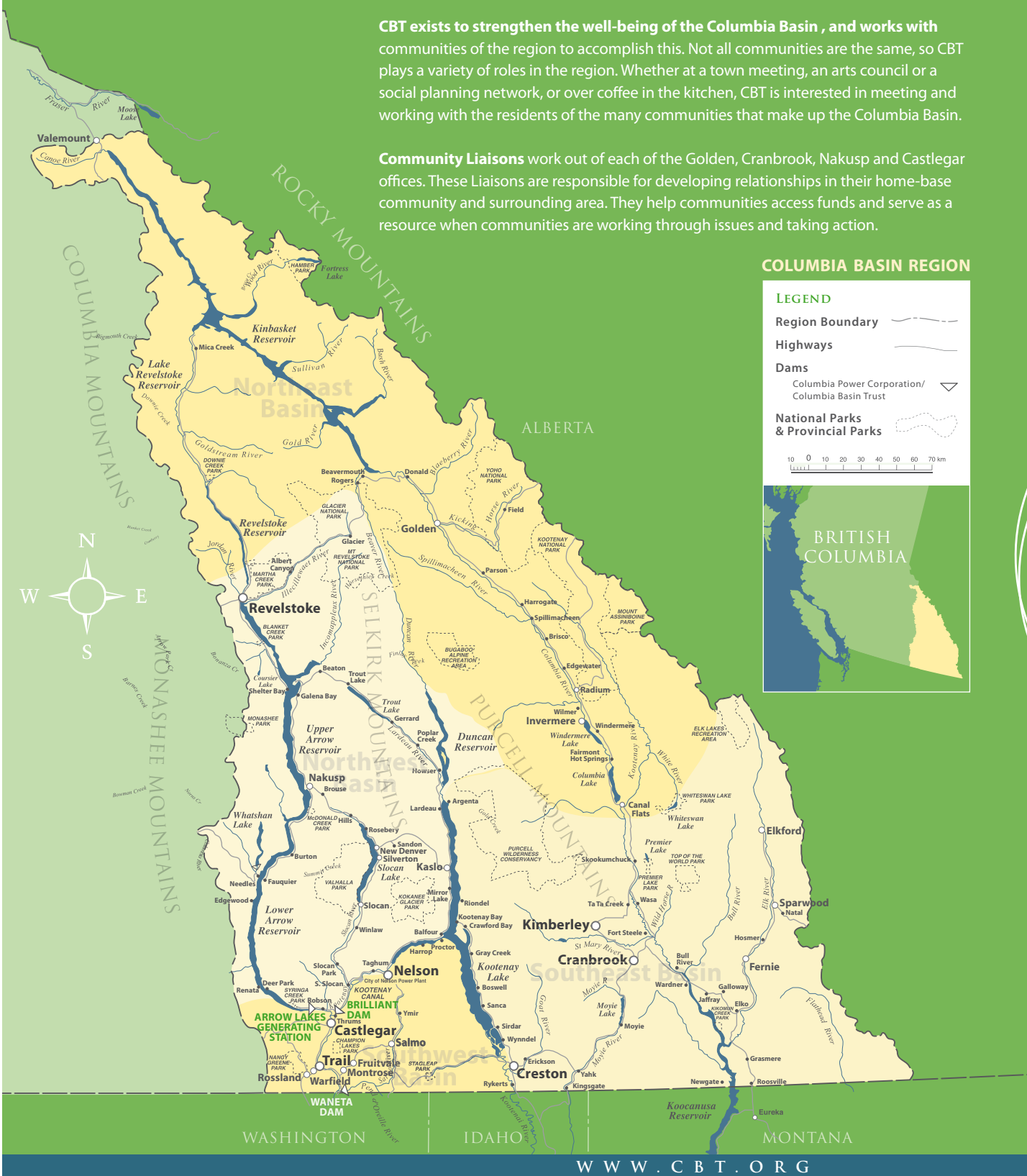




# Take Action With Us

**CBT exists to strengthen the well-being of the Columbia Basin, and works with communities of the region to accomplish this.** Not all communities are the same, so CBT plays a variety of roles in the region. Whether at a town meeting, an arts council or a social planning network, or over coffee in the kitchen, CBT is interested in meeting and working with the residents of the many communities that make up the Columbia Basin.

**Community Liaisons** work out of each of the Golden, Cranbrook, Nakusp and Castlegar offices. These Liaisons are responsible for developing relationships in their home-base community and surrounding area. They help communities access funds and serve as a resource when communities are working through issues and taking action.



## Our Staff

*Front Row: (Left to Right)* Diana Dorosz, Joanne Jones, Yvette Putter, Rachel Lucas, Viv Thoss, Delphi Hoodicoff, Roxanna Harris, Bree Seabrook

*Second Row: (Left to Right)* Michelle d'Entremont, Lisa Erven, Megan Catalano, Tracy Amies, Jennifer Krotz, Tim O'Doherty, Christine Lloyd, Sabrina Curtis, Richard Wake

*Third Row: (Left to Right)* Rhonda Gilbertson, Lynda Lafleur, Wayne Lundeberg, Aimee Ambrosone, Heather Mitchell, Charlene Desrochers, Maureen Forster, Neil Muth

*Fourth Row: (Left to Right starts midway with the gentleman in the plaid shirt)* Ryan Shulflita, Johnny Strilaeff, Nancy Boucher, Linda McInnes, Debra Stewart, Martin Cale, Owen Byrne

*Back Row: (Left to Right)* Kindy Gosal, Mike Perra, Rick Allen, Sylvie Angus, Dana Welsh, Rina Gresiuik, Wally Penner, Katherine Hamilton

*New This Year:* Sara Davis, Amy Pol, Carrie Schafer, Galadriel Watson

## WIN, WIN, WIN

Fill in the enclosed survey or visit [cbt.org/R2R2010feedback](http://cbt.org/R2R2010feedback) and you'll be automatically entered into a draw for a CBT prize pack.

## Get Linked in with BASINLink

BASINLink newsletter is CBT's bi-monthly electronic newsletter which includes:

- Board of Directors meeting highlights;
- upcoming events and deadlines;
- announcements; and
- feature stories on projects and initiatives.

[@cbt.org/subscribe](http://cbt.org/subscribe)

Printed in Canada. Design by [www.frolixdesign.com](http://www.frolixdesign.com).



**HEAD OFFICE/SOUTHWEST BASIN**  
Suite 300, 445 13th Avenue  
Castlegar, BC V1N 1G1  
1.800.505.8998 / 250.365.6633  
[cbt@cbt.org](mailto:cbt@cbt.org)

**NORTHEAST BASIN OFFICE**  
512 – 8th Avenue North  
Golden, BC V1A 1H0  
1.800.505.8998 / 250.344.7065  
[golden@cbt.org](mailto:golden@cbt.org)

**NORTHWEST BASIN OFFICE**  
Box 220, 220 Broadway  
Nakusp, BC V0G 1R0  
1.800.505.8998 / 250.265.9936  
[nakusp@cbt.org](mailto:nakusp@cbt.org)

**SOUTHEAST BASIN OFFICE**  
828D Baker Street  
Cranbrook, BC V1C 1A2  
1.800.505.8998 / 250.426.8810  
[cranbrook@cbt.org](mailto:cranbrook@cbt.org)

WWW.CBT.ORG