

**WANTED:  
INNOVATIVE IDEAS**  
Enter by September 12  
**PAGE 4**



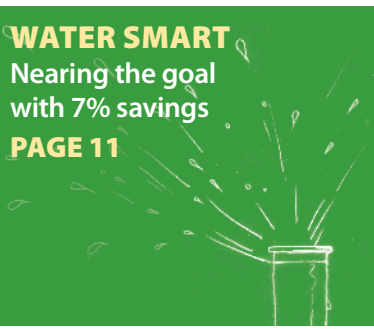
**ADDRESSING  
LITERACY**  
Renewed  
partnership  
with CBAL  
**PAGE 6**



**COMMUNITIES  
TACKLE  
PRIORITIES**  
Highlights  
from around  
the Basin  
**PAGE 8-9**



**WATER SMART**  
Nearing the goal  
with 7% savings  
**PAGE 11**



**INVESTING IN BASIN  
BUSINESSES**  
A Valemount bakery  
turns to CBT  
**PAGE 14**



# REPORT TO RESIDENTS

www.cbt.org

Summer 2012



This report's theme, *Foundation for Growth*, reflects our focus on strengthening our foundation to better serve Basin residents. We're building a foundation in the region by working with our partners and communities to build our collective capacity. And we're building CBT's foundation by implementing solid systems that can address the growth in our ability to deliver benefits to the Basin.



# Foundation for Growth

# Message From the Chair and CEO

*In 2011/12, we significantly increased our ability to deliver benefits to the Columbia Basin by leveraging and expanding our strategic partnerships, implementing new programs and initiatives and continuing to work collaboratively with residents and communities around key issues.*

**CBT supports efforts by the people of the Basin,** working with you to deliver social, economic and environmental benefits in the form of programs and initiatives to the region. This work is referred to as the Delivery of Benefits, which is dependent on a predictable income stream from CBT's investments in power projects, private placements and market securities.

Due to deliberate and prudent planning, we were able to deliver a record \$18.2 million in direct funding benefits to the region in 2011/12—60 per cent more than in the previous year. For more details on our financial position, please see the article on page three.

## HIGHLIGHTS

In 2011/12, we introduced three initiatives that shift decision making from CBT into the hands of Basin communities and residents, who are better placed to set their priorities and make their own decisions on how to allocate funds. These are:

- the Community Directed Youth Funds program, a six-year, \$2.25-million program that funds new activities and services for youth;
- the Social Grants Program, a three-year, \$3-million program that will provide grants to projects that support social well-being and address social issues; and
- Community Directed Funds, an innovative new way to foster collaboration between groups of communities (sub-regions) or communities of interest that will work together to administer funds to support their priorities.

We also moved forward to address affordable housing issues in the Basin by entering into a new partnership with BC Housing. CBT committed \$5 million to the Affordable Rental Housing initiative, a three-year, \$10-million program that will see the creation of new affordable rental housing in the region.

On the economic side, for the past two years CBT has offered wage subsidies for summer jobs for students; we are now also offering a wage subsidy for part-time work during the school year. We made a three-year, \$4.5-million commitment to these two programs.

CBT also supports environmental well-being. In 2011/12, we provided \$1 million to support the efforts of the Nature Conservancy of Canada to conserve the ecologically and culturally important Lot 48 on the eastern shore of Columbia Lake near Fairmont Hot Springs. In addition,

our Environmental Initiatives Program supported nearly 90 community-initiated and -supported environmental projects that aim to reduce the impacts humans have on local and regional ecosystems.

The year also saw CBT:

- engage more than 1,600 Basin residents in learning about the Columbia River Treaty—through 20 community, First Nations and online information sessions, plus a conference for young leaders—so they can effectively engage in formal consultation with senior levels of government on the future of the CRT;
- create a new subsidiary, the Columbia Basin Broadband Corporation, in order to create a world class open access broadband network across the Basin, as access to high-speed Internet can connect people, help businesses remain competitive in a global economy and provide educational opportunities; and
- work with Columbia Power Corporation and Fortis Inc. on the construction of the Waneta Expansion Project, which is within budget and on schedule, with completion expected by May 2015.

## FUTURE OUTLOOK

For 2012/13, we have budgeted \$20 million for our funding activities, an increase of \$1.8 million over last year.

We have also been identifying potential new roles and opportunities to work with Basin communities. Over the coming year, we will further explore some of those opportunities and



Garry Merkel, CBT Board Chair



Neil Muth, CBT President and CEO

their implications for CBT. Another important focus will be continued engagement with the people of the region, as we seek your input not only on our future direction, but on how we can build a better foundation.

## ACKNOWLEDGEMENTS

CBT's achievements are a testament to the contributions of our dedicated partners, advisory committees, staff and Board members, who help strengthen our foundation to increase our support and impact in Basin communities. Their passion and dedication to this organization, and to the people of this region, are helping create a lasting legacy in the Basin.

We would specifically like to thank Mike Berg, Ron Miles, Jim Miller, Ron Oszust, Bob Smith and Bill Trehwella, who served on our Board of Directors, and also welcome Wendy Booth, Gord DeRosa, Andru McCracken, Am Naqvi, Laurie Page and David Raven as new Board members. With the addition of six new directors, our Board is undergoing a positive rejuvenation, with fresh perspectives and ideas.

*And of course, we thank you all.*

Garry Merkel  
Chair, Board of Directors

Neil Muth  
President and CEO



*Back row (left to right): Paul Peterson; Denise Birdstone; Garry Merkel, Chair; Laurie Page; Gord DeRosa; David Raven. Seated left (left to right): Cindy Gallinger; Andru McCracken; Am Naqvi; Kim Dean. Seated right (left to right): Greg Deck, Vice-Chair; Wendy Booth.*

## Our Mission

*Columbia Basin Trust supports efforts by the people of the Basin to create a legacy of social, economic and environmental well-being and to achieve greater self-sufficiency for present and future generations.*

## Meet Our Directors

Learn more about our activities by attending the public component of Board meetings. View the schedule and access highlights and meeting minutes online.

[www.cbt.org/board](http://www.cbt.org/board)

# Financial Review and Forecast

In 2011/12, CBT delivered a record \$18.2 million in direct funding benefits to Basin communities through a variety of projects, programs and initiatives, up from \$11.2 million in 2010/11.

This growth was a result of a number of factors:

- An increase in uptake and demand for CBT's programs;
- An increase in the size of individual grants to projects; and
- An increase in demand for new programs and initiatives launched by CBT during the fiscal year.

The following pages provide some highlights of this work from across the region.

CBT recorded a deficit of \$1.4 million this year, partly due to making more funds available for Delivery of Benefits, as well as to a decrease in Power Project revenues. CBT's Investment Program earnings have increased over the past several years, resulting in CBT recording surpluses. As such, CBT is in a strong cash position to fund increases to Delivery of Benefits.

Overall, total revenues in 2011/12 were \$22.9 million, a decrease from \$29.5 million in 2010/11. The majority of revenue is generated by the Investment Program under three categories: Power Projects, Private Placements and Market Securities.

Power Projects—the largest contributor to the investment portfolio—was negatively impacted by a 22-day unplanned outage at Brilliant Expansion, as well as by one-time financing costs at Arrow Lakes Generating Station. This resulted in revenues decreasing to \$16.4 million in 2011/12, from \$22.4 million in 2010/11.

The Private Placements portfolio includes CBT's investment in real estate projects and Basin-based businesses. The revenue received from real estate projects—a portfolio of seniors housing facilities—has increased nominally to \$627,000, from \$596,000 in 2010/11. Revenues from commercial loans remained relatively unchanged from 2010/11, at \$1.2 million.

The Market Securities portfolio recorded revenues of \$860,000 in 2011/12, compared to \$1.5 million in 2010/11. This portfolio continues to be influenced by global market conditions; however, it is intended to be long term in nature and the expectation is for improved returns over time.

Another important contributor to CBT's revenues is our portfolio of Short-term Investments, which consists of

interest revenue from short-term deposits held at financial institutions and with the British Columbia Investment Management Corporation. Additional funds were invested in 2011/12 from the proceeds of a new bond financing, which will remain invested until required for CBT's investment in the Waneta Expansion Project. These additional deposits increased revenues to \$2.1 million, an increase from \$1.1 million in 2010/11.

Looking ahead over the next three years, total revenues are expected to be higher than those experienced in 2011/12. Revenues from Power Projects are expected to grow as the issues at Brilliant Expansion have been addressed. While revenues from Private Placements are also expected to increase slightly, the regional and broader economic climate may influence these returns. We are excited by a positive financial outlook moving into the new fiscal year and beyond, and have increased our expected funding of Delivery of Benefits to \$20 million in 2012/13.

For more details on our performance and financial position, CBT's 2011/12 Annual Report is available online at [www.cbt.org/annualreport](http://www.cbt.org/annualreport), or call 1.800.505.8998 to receive a copy.

# \$18.2 million

in direct funding benefits to Basin communities through a variety of projects, programs and initiatives, up from \$11.2 million in 2010/11.



## CBT's Annual Report

Learn more about CBT's performance and financial position, and the activities we support, in our 2011/12 Annual Report.

[www.cbt.org/annualreport](http://www.cbt.org/annualreport)

## You Are Invited

Each year we host our Annual General Meeting in a different community around the Basin. Join us in Valemount for a community BBQ on Friday, September 21, 2012.

[www.cbt.org/agm](http://www.cbt.org/agm)

## CONSOLIDATED STATEMENT OF OPERATIONS (FOR THE YEAR ENDING MARCH 31)

(in thousands of dollars)

	2012	2011
Revenues	\$22,938	\$29,532
Delivery of Benefits	18,210	11,167
Administration Expenses	6,175	5,681
Annual (Deficit)/Surplus	\$(1,447)	\$12,684

## CONSOLIDATED STATEMENT OF FINANCIAL POSITION (AS AT MARCH 31)

(in thousands of dollars)

	2012	2011
Financial Assets	\$428,735	\$430,944
Liabilities	1,642	1,734
Non-financial Assets	2,930	2,798
Accumulated Surplus	\$430,023	\$432,008

## RETURN ON INVESTMENTS (FOR THE YEAR ENDING MARCH 31)

	2012	2011
Power Projects	10.05%	7.33%
Private Placements	7.29%	8.32%
Market Securities	1.60%	10.10%

CBT was established by the Columbia Basin Trust Act in 1995 and has two core functions: to invest capital and manage the assets of CBT, and to spend the income earned from CBT's investments to deliver benefits to the Basin.

# Advice From Residents Like You

One way CBT remains accountable to Basin residents is through our use of advisory committees, which provide advice on CBT's priorities and our delivery of benefits to the region. We have three advisory committees in our core areas of social, economic and environment, plus a youth advisory committee that provides advice on youth initiatives. Committee members play an important role in providing community perspectives, sectoral expertise and strategic advice on CBT's activities and priorities.

[www.cbt.org/committees](http://www.cbt.org/committees)

Members of CBT's advisory committees.



## Wanted: Innovative Ideas

BC Ideas is an online competition that is seeking innovative solutions to strengthen BC communities. CBT is providing five \$10,000 cash awards to successful entries demonstrating direct impacts in the Basin.

Enter by September 12, 2012.

[www.bcideas.ca](http://www.bcideas.ca)



**BCideas**  
solutions for stronger communities

### Mark Your Calendar! Columbia Basin Symposium Fall 2013

An important role for CBT is bringing residents together at events like the Symposium, to help the region work toward solutions to shared challenges, celebrate our accomplishments and create a legacy of social, economic and environmental well-being for all.

[www.cbt.org/2013symposium](http://www.cbt.org/2013symposium)

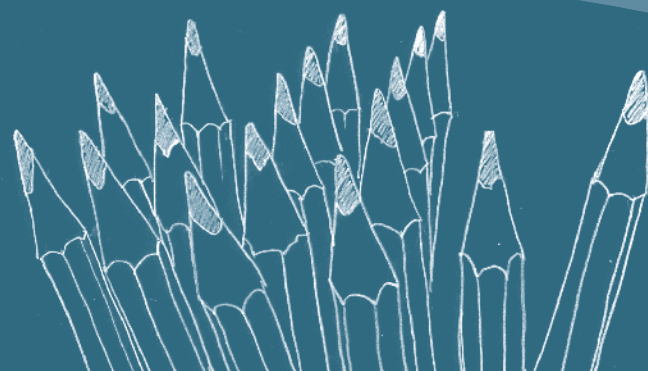


## Residents Sharpened Their Grant Writing Pencils

CBT's community liaisons hosted free grant writing workshops this winter, held in 21 communities and attended by 600 Basin residents. Topics included identifying funders, focusing project ideas, writing project proposals and budgeting. Overviews of CBT's granting programs were also provided.

If your group would like to set up a workshop, let us know and one of our community liaisons will come to you. Our community liaisons help residents and communities access funds and serve as resources when communities are working through issues and taking action.

[www.cbt.org/contact](http://www.cbt.org/contact)



# A Strong Economic Foundation

Our economic vision for the Basin is one in which local and regional economic well-being is actively fostered and the economy is diverse, resilient and energized.

With a commitment to workforce development, we offer student wage subsidies through the Summer Works Program and the new School Works Program. The bursary-style Training Fee Support program also builds a strong foundation for employment, promoting access to training that helps Basin residents adapt to meet immediate employment needs.

We also encourage regional economic collaboration through

building and strengthening economic networks and partnerships. A new partnership with Invest Kootenay—a joint initiative of local governments, economic organizations and chambers of commerce with the aim of attracting and retaining investment in the Kootenay region—strengthens and supports a healthy economic landscape.

Our Basin Business Advisors program and our support for the Manufacturing and Technology Sector Initiative are helping to develop a vibrant entrepreneurial culture.

[www.cbt.org/economic](http://www.cbt.org/economic)



We hosted a gathering of economic development professionals from around the Basin last winter, which was an opportunity for participants to meet industry leaders, find out about the latest economic trends and share successes and challenges with their peers.

## Supporting Skills Development

CBT's Training Fee Support (TFS) program supports access to short-term education or training that helps residents adapt to meet immediate employment needs. The program allows each eligible unemployed or underemployed resident to access up to \$800.

[www.cbt.org/tfs](http://www.cbt.org/tfs)

# 1,150+

people have received funding to access training through the TFS program over the past year.

## Enabling Broadband in the Basin

In 2011, CBT acquired the fibre optic network assets of the Columbia Mountain Open Network (CMON) to expand on its vision to bring broadband to the Basin. CBT also created the Columbia Basin Broadband Corporation to manage these assets and take steps toward creating a regional network. The mission is to provide connectivity to a world class open access broadband network across the region.

*Left to right:* Neil Muth, CBT President and CEO; Richard Wake, CBT Chief Technology Officer; Lawrence Chernoff, CMON Vice-Chair; Duane Birnie, Information Systems Coordinator, City of Trail; and Dieter Bogs, CMON Chair, show a Fibre Optic Splice Closure, which is used to interconnect and contain fibre optic strands.

[www.cbt.org/broadband](http://www.cbt.org/broadband)



“I had a chance to improve my people and people-helping skills. It was very one-on-one, with lots of questions. I also increased my knowledge about books, as I've been giving reading recommendations, and practiced my writing skills through writing documentation on how to use eReaders.”

MARINA CUNNINGHAM, SCHOOL WORKS EMPLOYEE, NAKUSP PUBLIC LIBRARY



# 216

## Jobs for Students

This year CBT announced the School Works Program, which joins the popular Summer Works Program as part of a \$4.5-million commitment to increase employment opportunities for students in the Basin over the next three years. The pilot School Works Program got under way this year, with 64 businesses across the Basin receiving an \$8/hour wage subsidy to employ a student. The Summer Works Program provided 152 jobs last summer. The programs encourage the hiring of students during the school year and in the summer.

[www.cbt.org/schoolworks](http://www.cbt.org/schoolworks)

[www.cbt.org/summerworks](http://www.cbt.org/summerworks)

*Left to right:* Sabina Iseli-Otto, Librarian, and Marina Cunningham, School Works employee, at the Nakusp Public Library.

## Building a Diverse Economy

The Manufacturing and Technology Sector Initiative (MATS) is a two-year initiative supporting the development of the manufacturing and technology sector in the Basin. It is delivered with CBT support by the Kootenay Association of Science and Technology (KAST) and Kootenay Rockies Innovation Council (KRIC).

A key part of MATS is the Business Retention and Expansion survey, which will allow for a greater understanding of the manufacturing and technology sector and help the initiative provide support tailored to the specific needs of regional businesses. Sector business people can also participate in workshops and networking sessions and look forward to the launch of a virtual business resource centre and coaching services.

### Interested in learning more about how you can be involved?

Contact KAST in the West Kootenay at [info@kast.com](mailto:info@kast.com) or KRIC in the East Kootenay at [info@kric.ca](mailto:info@kric.ca).

### SAVE THE DATE!

MATS is presenting the Kootenay Business and Innovation Conference on Friday, October 26, 2012, in Nelson. World class experts will share their knowledge and insights with manufacturing and technology entrepreneurs from around the Basin.

[www.kast.com](http://www.kast.com)

[www.kric.ca](http://www.kric.ca)

[www.cbt.org/mats](http://www.cbt.org/mats)



# Addressing Literacy Issues

Basin communities will be able to continue to address their own literacy priorities, as we have renewed our partnership with the Columbia Basin Alliance for Literacy (CBAL). Given CBAL's demonstrated track record and the increased demand for the services it provides, we're excited we can both renew our partnership and increase our support.

CBT is committing \$1.32 million over three years to support CBAL—an increase of 10 per cent over the previous agreement.

Whether adult literacy is the focus, or toddlers learning to read, CBAL helps Basin communities identify their own literacy needs and offers support to meet those needs.

[www.cbal.org](http://www.cbal.org)

[www.cbt.org/cbalrenewal](http://www.cbt.org/cbalrenewal)

“Our renewed partnership with CBT is a key factor in helping us meet increasing community demands for our programs, ensuring communities can access a range of literacy support services based on their own priorities.”

ALI WASSING, CBAL EXECUTIVE DIRECTOR

CBT Board member Am Naqvi congratulated CBAL and the literacy coordinators and community volunteers for their commitment and positive impact in advancing literacy development in the Basin.

Left to right: Am Naqvi, CBT Board member; Christy Louise Luke, CBAL Board member; Ali Wassing, CBAL Executive Director; Neil Muth, CBT President and CEO; Wendy Tagami, CBAL Board member.



# New Affordable Rental Housing Initiative



There will be more affordable rental housing available in the Basin thanks to the new Affordable Rental Housing initiative (ARHi). The \$10-million, three-year program is a result of federal, provincial and CBT investments; the Government of Canada and Province of BC are providing a combined investment of \$5 million, while CBT is contributing another \$5 million.

The first opportunity to apply for support from the initiative was in spring 2012, and a second opportunity to apply is anticipated in spring 2013.

One of CBT's strategic priorities is to help Basin communities deal effectively with affordable housing issues and to support new housing initiatives. In addition to the ARHi, CBT has also helped communities plan affordable housing projects, provided capital grants to projects and shared information on affordable housing issues.

[www.cbt.org/arhi](http://www.cbt.org/arhi)



**\$10** million  
three-year program  
as a result of  
federal, provincial  
and CBT support.

# Continuing to Strengthen Community Service Agencies

The Kootenay Boundary Community Services Co-operative (KBCS Co-op) continues to strengthen community social service agencies throughout the Basin by increasing awareness of the value brought to communities by these agencies.

In addition, through its REACH Program, agencies can access local training opportunities and receive consulting services in the area of organizational development.

CBT has renewed its partnership with KBCS Co-op for another two years with \$532,000.

[www.basinreach.ca](http://www.basinreach.ca)

[www.thekoop.ca](http://www.thekoop.ca)



Staff from social service agencies in the Basin attend a workshop made possible by the KBCS Co-op and CBT partnership.

## New Social Grants Program

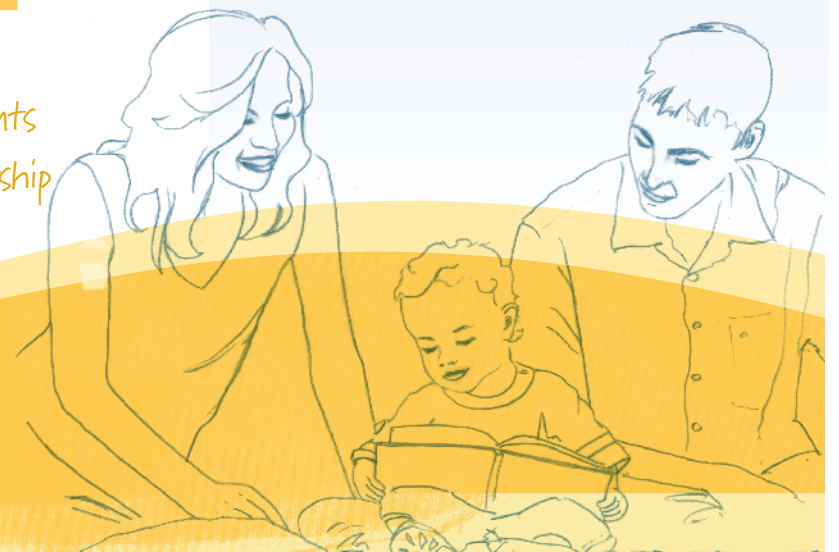
Residents in Basin communities are working to address a range of social issues, from connecting with isolated senior citizens to ensuring young families have access to early childhood development programs. Projects like these will soon have access to funding through CBT's new \$3-million Social Grants Program. Granting decisions will be made by a volunteer committee of Basin residents who have experience and expertise in the social sector and actively engage in their communities. CBT has finalized the parameters of this program and will begin accepting applications this fall.

[www.cbt.org/sgp](http://www.cbt.org/sgp)

[www.cbt.org/socialgrants](http://www.cbt.org/socialgrants)

**1,600+**

participants have accessed training events through KBCS Co-op since its partnership with CBT began in 2009.



# Funds in the Hands of Communities

**Community Directed Youth Funds (CDYF)** aims to increase local activities, opportunities and/or services for youth ages 12 to 19 by providing community areas with \$100,000 over four years. Six areas are already receiving these funds:

- Salmo, Ymir and area;
- Golden and area;
- Revelstoke and area;
- New Denver/Silverton and area;
- Crawford Bay/Riondel and area; and
- Montrose, Fruitvale, Beaver Valley and area.

An additional nine communities have been accepted for the program and are moving through the priority-setting process with CBT. The program will be available to the remaining Basin communities over the next two years, with the next intake deadline scheduled for October 15, 2012.

[www.cbt.org/cdyf](http://www.cbt.org/cdyf)

[www.cbt.org/youthfunds](http://www.cbt.org/youthfunds)

“Both youth and adults in the community have been talking about addressing the gaps in youth services and opportunities for years. Since CDYF became available, there is finally a flexible funding opportunity to help address the needs of youth in Basin communities.”

MONICA DE, WHO PARTICIPATED IN THE CDYF PROCESS FOR GOLDEN AND AREA



CBT's Youth Advisory Committee, shown above, is a group of involved, inspired, creative youth (15 to 29 years old) from around the Basin who are interested in making a difference in their communities. The committee provides input to CBT on youth involvement and youth issues.

## Rewarding Community Service

Basin residents are encouraged to roll up their sleeves and get volunteering! To reward community service, each year CBT hands out 45 Youth Community Service Awards to high-school students and 21 College Community Service Awards to college students in the Basin, valued at \$2,000 each. The goal of both is to reward and encourage volunteerism, while the college awards also assist students in pursuing post-secondary education and training.

[www.cbt.org/ccsa](http://www.cbt.org/ccsa)

[www.cbt.org/ycca](http://www.cbt.org/ycca)

# 400+

students rewarded for volunteering to date.



Melissa Monsen, award recipient.

“I am very grateful to have received this award. I am a single mother of two and a full-time nursing student. The award is a great help to my family and is very much appreciated.”

MELISSA MONSEN, COLLEGE COMMUNITY SERVICE AWARD RECIPIENT AND NURSING STUDENT AT THE COLLEGE OF THE ROCKIES

# Basin Youth Connect Through Action



**Over 50 Basin youth demonstrated** passion and a commitment to connect with their communities after attending CBT's Youth Action Summit in Kimberley. The goal of the event was to support the youth to get inspired, educated and empowered to create action events in their own communities. The result was **CONNECT: Youth Action Month**, in May 2012, which saw 18 youth-inspired and -created Action Events take place throughout the Basin. Events ranged from conversations around sustainability to community bike racks, a pet food drive for the SPCA to awareness campaigns about bullying.

[www.cbt.org/connect](http://www.cbt.org/connect)



### SPEAK UP, SPEAK OUT YOUTH DINNER, CRANBROOK

Youth facilitators Lani Davis, Darelyn Hutchinson and Lauren Nilsson organized and hosted the Speak Up, Speak Out Youth Dinner in Cranbrook, which provided a space for a mix of young people to come together to identify community assets and challenges and explore ideas for the future.

Left to right: Lani Davis, Darelyn Hutchinson, Lauren Nilsson.



“The best part of the event was seeing all the youth from different backgrounds come together in a non-judgmental atmosphere and participate as an inclusive group.”

DARELYN HUTCHINSON, SPEAK UP, SPEAK OUT YOUTH DINNER ORGANIZER

## More Cash for Students

Apply to get up to \$1,500 to help with expenses to attend a college in the Basin. CBT's new Columbia Basin Bursary Program is based on financial need rather than academic achievement.

[www.cbt.org/cbbp](http://www.cbt.org/cbbp)

## Building Youth Capacity and Leadership

Youth-led film camps, parkour leadership training, school literacy campaigns, mentoring programs, youth theatre programs—these are a sampling of the ways CBT's Columbia Basin Youth Grants fund projects that build youth capacity, develop youth leadership skills and involve young people directly in the planning and doing.

Colton Little Wolf Luke of the Lower Kootenay Band took part in the Youth Social Action Theatre Program in Creston, which presented its 25-minute play to an audience of 80 in November 2011. After his experience in the program, Colton said he was happy he accepted the offer to participate and that this was a very positive program for Creston.

[www.cbt.org/cbyg](http://www.cbt.org/cbyg)

Happy 10th anniversary to **SCRATCH** magazine, CBT's youth-driven, alternative media source that celebrates youth culture. [www.scratchonline.ca](http://www.scratchonline.ca)



# Helping Communities Address Their

Our key approach to delivering benefits is to support communities and residents in identifying their priorities and to provide funds based on those priorities.

**Using the income earned from our Investment Program, CBT—either on our own or through partnerships with other organizations—develops, implements and manages programs and initiatives that respond to community and regional needs, working closely with Basin organizations and residents throughout the process.**

Many examples of this are featured throughout this report, and the highlights on these two pages showcase the way in which our Community Development Program supports communities.

CBT supports hundreds of projects each year through several programs and initiatives. See what's happening your community!

[www.cbt.org/fundedprojects](http://www.cbt.org/fundedprojects)

[www.cbt.org/programs](http://www.cbt.org/programs)

## HOW CBT SUPPORTS YOU

CBT serves the people who live in the Basin and assists communities in addressing their needs by:

- providing resources and funding;
- focusing on local priorities and issues;
- bringing people together around key issues;
- providing useful, credible, accessible information and expertise;
- encouraging collaboration and partnerships;
- seeking ongoing input from Basin residents; and
- investing prudently in Basin power projects, businesses and real estate.

## A New Approach

We are starting to pilot a new initiative—Community Directed Funds—which is an innovative way to shift decision making from CBT to groups of communities that will work together to administer funds to support their priorities. Under this initiative, groupings of communities (sub-regions) and groups across the Basin bound by similar interests (communities of interest) will be given funds and the ability to set priorities and make their own decisions on how to allocate those funds based on broad parameters agreed upon with CBT.

## Basin Communities Go Green to Ensure More Sustainable Long-term Operations



### REDUCING ENERGY COSTS

The City of Nelson is making energy conservation a priority. CBT's support will see a new District Energy Business Plan drafted as part of the City's Climate Action and Energy Plan. Residents can also take advantage of the new EcoSave Energy Retrofits Program. This program encourages homeowners and businesses to take advantage of free energy audits, plus provides access to energy rebate programs and on-bill financing to assist with making upgrades that significantly reduce energy costs and greenhouse gas emissions. CBT supported the City with \$90,000 for these two projects.

[www.nelson.ca](http://www.nelson.ca)



Jeff Dolinsky,  
President,  
Golden Nordic  
Ski Club Society.

### IMPROVED SYSTEMS

Golden's Dawn Mountain Nordic Centre is reducing its environmental footprint and greenhouse gas emissions, resulting in lower costs and more sustainable operations. This is thanks to a new geothermal heating system and Ecoflow septic system, which it recently installed with \$52,000 in support from CBT.

[www.cbt.org/goldennordic](http://www.cbt.org/goldennordic)

### ALL-SEASON AMENITIES

From swimmers and kayakers to cross-country skiers and skaters, Invermere residents and visitors have made Kinsmen Beach on Lake Windermere a year-round destination. A new amenity building will replace the existing washrooms and concession, which are open only in summer, while providing additional space for equipment rentals and small gatherings. The building will integrate eco-friendly building practices. For example, water will be heated by the sun and grey water will be used for irrigation. The goal is to be energy efficient and carbon neutral and to minimize greenhouse gas emissions. The end result will be a facility that can support year-round use by individuals, host small events and provide a venue for larger outdoor events. CBT supported this project with \$200,000.

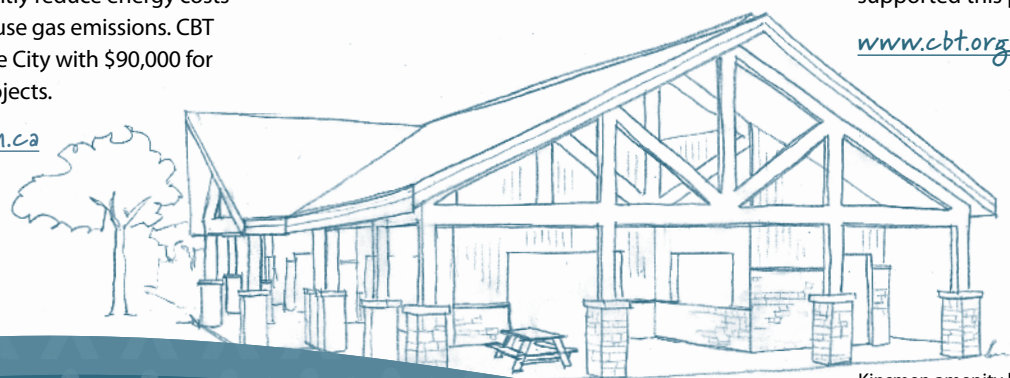
[www.cbt.org/kinsmenbeach](http://www.cbt.org/kinsmenbeach)



### BATTENING DOWN THE HATCHES

Valemount's Senior Citizens Housing Society replaced the windows in its Golden Years Lodge thanks to \$15,000 received through CBT's Community Initiatives and Affected Areas Programs (CIP/AAP). The energy-efficient design of the new windows will decrease heating costs. The CIP/AAP fund programs designed to help address the needs of Basin communities. The programs are flexible and incorporate community-based funding decisions to better meet local priorities. Program funds are distributed once a year to CBT's local government partners: the regional districts of East Kootenay, Central Kootenay and Kootenay Boundary, and the City of Revelstoke, Town of Golden/CSRD Area A, Village of Valemount and Ktunaxa Nation Council.

[www.cbt.org/cipaap](http://www.cbt.org/cipaap)



Kinsmen amenity building.

"Since the development of the Whiteway in 2008, Kinsmen Beach has become the prime year-round venue for outdoor community activities. The new amenity building will increase the enjoyment of those wishing to experience Lake Windermere and the recreational and social benefits it provides." Gerry Taft, Mayor, District of Invermere

# Priorities

1

## CRESTON VALLEY EMERGENCY SERVICES CENTRALIZE

Creston Valley emergency services groups have a new, centralized place to call home as CBT provided \$100,000 toward the construction of an emergency services building, located at the Creston Valley Regional Airport. Partners on the \$375,000-project included the Creston Valley Regional Airport Society, Civil Air Search and Rescue Association, Regional District of Central Kootenay Emergency Services and Ground Search and Rescue. The Town of Creston also supported the project.

[www.cbt.org/crestonvalleyemergency](http://www.cbt.org/crestonvalleyemergency)

2

## FERNIE AND ELK VALLEY HERITAGE HOMAGE

The Fernie Miners Walk was unveiled this past fall after several years of hard work by the Fernie Miners Walk Society. The exhibit celebrates the past, present and future of coal mining in Fernie and the lives of those who have been mining in the Elk Valley for the past 100 plus years. Fernie and the Elk Valley have been a major player in the mining industry for over a century and now there is something visible to commemorate this very important factor that is the economic backbone of life in the valley. CBT supported this project with \$75,000.

[www.tourismfernie.com](http://www.tourismfernie.com)

3

## PUBLIC GATHERING PLACES GET UPGRADES

Slocan Park and Crescent Valley residents are now able to enjoy upgraded community halls. CBT provided \$22,000 to Slocan Park Hall, which was used to paint the hall's porch and interior and purchase and install a new sound system. This is part of a bigger renovation project that also included increasing energy efficiency through new exterior siding, windows and window coverings and a new heating system. The Crescent Valley Community Hall received \$15,000 to make the washrooms environmentally friendly and accessible.

[www.cbt.org/slocanparkhall](http://www.cbt.org/slocanparkhall)

[www.cbt.org/crescentvalleyhall](http://www.cbt.org/crescentvalleyhall)

4

## A ONE-STOP SHOP FOR FAMILIES

East Kootenay families can access child health and development services in one central location thanks to the new Kootenay Child Development Centre. The project was spearheaded by the Community Connections Society of Southeast BC and benefited from \$250,000 in support from CBT.

[www.cbt.org/kootenaychild](http://www.cbt.org/kootenaychild)

5

## BETTER PUBLIC ACCESS TO KOOCANUSA RESERVOIR

CBT was one of several organizations that supported the construction of a new boat launch on Koocanusa Reservoir. Located on the northwest side of Kikomun Bridge, the two-hectare site includes a ramp, floating breakwater, floating dock, outhouse, garbage receptacle and parking for up to 60 vehicles and trailers. The launch bears a Ktunaxa name, Yaqakxaqlamki (YA-KAK-HAK-TLAM-KEY), which means "the place where the boat leaves the shore."

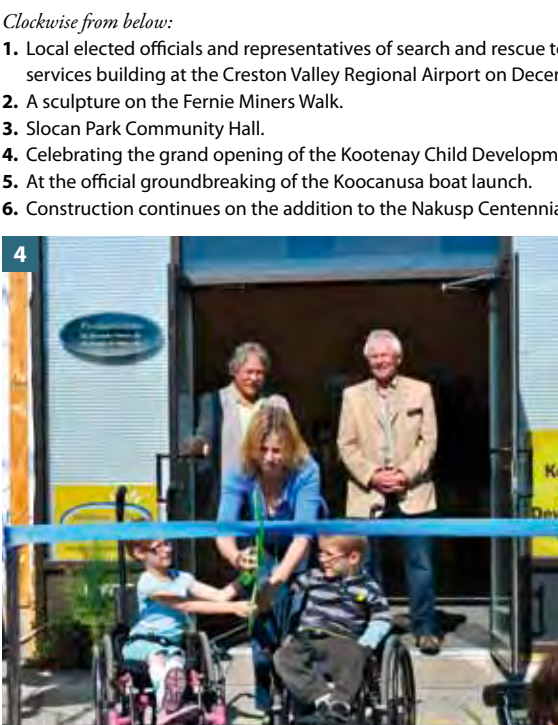
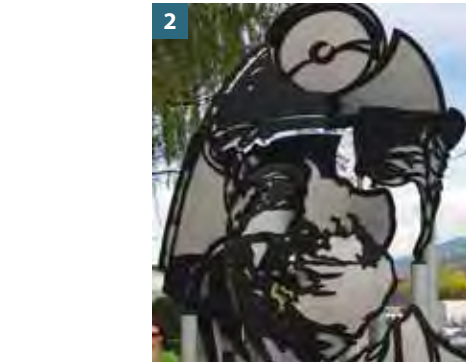
[www.cbt.org/koocanusaboatlaunch](http://www.cbt.org/koocanusaboatlaunch)

6

## SERVICES UNITE UNDER ONE ROOF

Construction began in late 2011 on an addition to the Centennial Building in Nakusp, which will house the archives of the Arrow Lakes Historical Society. The building is currently home to the Nakusp and District Museum and Nakusp Public Library. The addition will allow all three services to unite under one roof, while providing a permanent, safe home for archival material and reducing operating costs for each organization, helping them achieve sustainable futures. CBT supported the project with \$100,000.

[www.cbt.org/centennialbuilding](http://www.cbt.org/centennialbuilding)



Clockwise from below:

1. Local elected officials and representatives of search and rescue teams and CBT attended the opening of the new emergency services building at the Creston Valley Regional Airport on December 2, 2011. (Photo courtesy of Creston Valley Advance.)
2. A sculpture on the Fernie Miners Walk.
3. Slocan Park Community Hall.
4. Celebrating the grand opening of the Kootenay Child Development Centre.
5. At the official groundbreaking of the Koocanusa boat launch.
6. Construction continues on the addition to the Nakusp Centennial Building.

"MLA Bennett has provided strong leadership in working diligently with various community organizations, local government and First Nations to build a two-lane boat launch on Koocanusa Reservoir. We are grateful for the excellent co-operation of the funding organizations." Ray Kelly, Kootenay Power Boat Association



## Local Students Dive Into Water

**Nine communities, 19 classes and 405 students**—that's the participation level across the Basin this past year in CBT's Know Your Watershed program.

The program includes two classroom sessions and a field trip that helps teach grade eight students where their water comes from, how it's used in their communities and where it goes after it's used. Most of the students then completed Student Action Projects, which ranged from school-wide water conservation programs to community projects like painting storm drains.

The communities that participated this past year are: Cranbrook, Creston, Fernie, Nakusp, Nelson, New Denver, Revelstoke, Rossland and Valemount.

[www.cbt.org/water](http://www.cbt.org/water)



*Above left:* Students from Revelstoke Secondary School spent an afternoon at a local creek dipping for invertebrates and doing water testing. Results of the water test were discussed in class.

*Above (left to right):* Emma Leatham and Maddy Maxinuk from New Denver's Lucerne Elementary Secondary School caught aquatic insects to see what kind of macroinvertebrates live in Carpenter Creek.

## Revising a Program to Better Meet Needs

# 30,000+

visitors come to the Kokanee Creek Interpretive Centre each year.



**CBT revised the application deadlines** and funding amounts of its Environmental Initiatives Program (EIP) to better meet the needs of program applicants.

The maximum funding for large grants increased from \$20,000 to \$30,000, and its application deadline switched from spring to fall. (The next large grants application deadline will take place in fall 2012.) The program also initiated a continuous intake for small grants up to \$10,000, as funding is available. In all, nearly 90 projects received support during the 2011/12 fiscal year.

The Kokanee Creek Interpretive Centre, located at Kokanee Creek Provincial Park and run by the West Kootenay EcoSociety, is one of the projects that has benefited from EIP. The centre provides ecological programs to 10 – 12,000 visitors per year, plus provides information to 30 – 40,000 visitors through displays, videos and handouts. It also offers children's programs, guided hikes, camps, workshops and classes.

[www.cbt.org/eip](http://www.cbt.org/eip)



### Columbia Lake – Lot 48 Conserved

Congratulations to the Nature Conservancy of Canada for raising the \$7.2 million needed to create a network of protected lands that will span more than 7,600 hectares, plus protect an area that is integral to the history of the Ktunaxa Nation. Located on the east shore of Columbia Lake, approximately five kilometres south of Fairmont Hot Springs, Lot 48 is 127 hectares of ecologically and culturally important private property situated between protected areas and Crown land. CBT is proud to provide the Nature Conservancy of Canada with \$1 million toward the conservation of Columbia Lake – Lot 48.

[www.cbt.org/lot48](http://www.cbt.org/lot48)



Mel Reasoner, Coordinator, Kokanee Creek Interpretive Centre.

*"The Ktunaxa Nation supports all efforts to conserve Lot 48 and area for future generations, and we would like to commend Columbia Basin Trust and the Nature Conservancy of Canada for their work and dedication to this common goal!" Kathryn Teneese, Ktunaxa Nation Chair*



Coming soon: "Climate Change Science 201," a five-minute video explaining new science around the changing climate in the Basin.

## Garnering International Attention

**CBT's Communities Adapting to Change Initiative (CACCI)** is on the leading edge of climate adaptation planning, according to Canadian and international adaptation planning circles. Most recently the District of Elkford's climate adaptation project was included in the United Nations Framework Convention on Climate Change guidebook *Assessing the Costs and Benefits of Adaptation Options*.

The District of Elkford was one of the first communities to take part in CACCI, which supports communities to increase their resiliency to potential local climate change impacts. With the initiative now in phase three, our Climate Adaptation Team is continuing to work with Basin communities by:

- supporting them as they implement their climate adaptation plans;
- engaging new communities to initiate climate adaptation planning; and

- communicating credible and current information on climate change science, impacts and adaptation to communities and residents.

Eight climate adaptation projects are under way, addressing various aspects of municipal infrastructure, watershed management, water monitoring, flood control and community engagement. The team is also preparing an in-depth report and short video to communicate the latest climate science updates for the Basin.

The initiative is currently recruiting new communities interested in a one-day Adaptation Planning and Scanning Workshop. If your community is interested, contact Kate Mahoney, Coordinator, CACCI, at [adaptation@cbt.org](mailto:adaptation@cbt.org).

[www.cbt.org/climatechange](http://www.cbt.org/climatechange)



Water Smart Ambassadors determine the efficiency of an irrigation system by measuring the volume of water from the sprinklers. Find out if your community has a Water Smart Ambassador and call for your FREE lawn and garden water assessment.

# 830

Olympic-sized pools could be filled with the amount of water Basin communities have saved.

### Water Stewardship Groups Learn Science Matters

In spring 2012, 60 people, including Basin residents, representatives from local watershed groups, water science experts and local government staff, gathered in Kimberley for Science Matters: How Water Science Influences Decision Making. The conference was hosted by the Columbia Basin Watershed Network (CBWN), one of several water stewardship projects funded by CBT.

Conference participants explored how to find commonalities and synergies to foster partnerships in water science in the Basin. Information sharing and coordination in water quality and quantity monitoring was identified as a high priority among water stewardship groups and water experts.

CBWN works with Basin residents, water stewardship groups and water science experts to collaborate on sharing information and raising awareness of water stewardship efforts.

Learn more about CBWN and find out what it takes to become a member.

[www.cbwn.ca](http://www.cbwn.ca)

## Results Show 7% Savings

In 2009, 23 communities made a commitment under the Columbia Basin Water Smart Initiative (Water Smart) to work collectively to address water conservation and to work toward a Basin-wide target of reducing community water demand by 20 per cent by 2015.

By implementing community-specific Water Smart Action Plans, communities have achieved an average of seven per cent annual water savings, with some reaching over 20 per cent. Since 2009, communities have conserved over 2,094 megalitres of water on an annual basis, which is enough to fill over 830 Olympic-sized pools.

This summer, 14 communities have hired local Water Smart Ambassadors, who are educating residents about outdoor water conservation. Typically, community water use peaks in spring and summer due to lawn and garden watering.

By reducing peak demand, we reduce our impact on water supply, distribution and treatment infrastructure and the environment. Contact your local Water Smart Ambassador and find out how you can begin conserving water.

Water Smart is also supporting local governments in implementing best practices for irrigation and for reducing water loss in community distribution systems. Both of these areas offer opportunities to conserve millions of litres of water annually. Water Smart is continually working with elected officials and staff to build their water conservation knowledge and implement effective strategies to reduce water use in the Basin.

[www.cbt.org/watersmart](http://www.cbt.org/watersmart)



Use a hose timer, avoid evaporation and let grass grow.  
See more water conservation tips at [www.cbt.org/watersmart](http://www.cbt.org/watersmart).

# 1,600

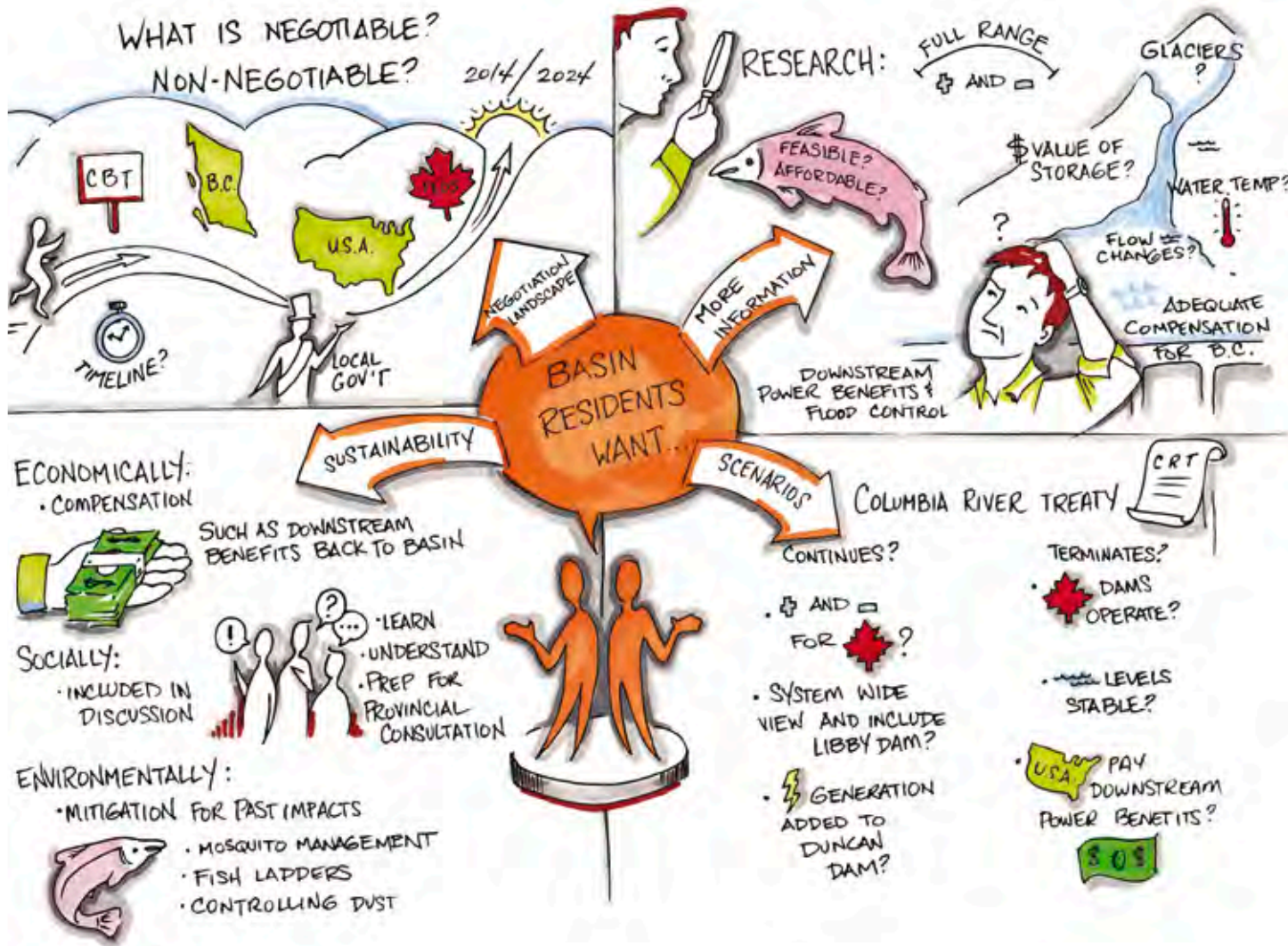
of you engaged in learning about the Columbia River Treaty (CRT). From June 2011 to February 2012, CBT,

in partnership with the CRT Local Governments' Committee, hosted public information sessions about the CRT in 14 communities, plus three online sessions. In addition, three information sessions were held for First Nations and a conference for young leaders.

The themes below reflect the feedback we heard.



Kindy Gosal, CBT Director, Water and Environment, and Ken Hall and Josh Smienk, members of CBT's Water Advisory Panel, answered questions at the CRT information session in Nelson in 2011.



### WHAT IS IT?

The 1964 CRT is an agreement between Canada and the United States to jointly manage the Columbia River to coordinate flood control and optimize hydroelectric generation on both sides of the border. Three dams—Duncan, Hugh Keenleyside and Mica—were built in Canada and a fourth dam, Libby, was built on the Kootenay River in Montana. These dams created large reservoirs that store water for flood control and hydro generation.

### WHY DOES IT MATTER?

While there are benefits of the CRT, the dams created large reservoirs—Arrow Lakes, Duncan, Kinbasket and Koocanusa—that flooded fertile valley bottoms, displaced residents and altered the social, economic and environmental fabric of the Basin. Any decisions about the future of the CRT will continue to influence water management in this region—including the East and West Kootenay and north to Valemount—for decades to come.

# 2024

is the earliest date either Canada or the U.S. can terminate some but not all of the provisions of the Columbia River Treaty

Canada or the U.S. would need to give a minimum of 10 years' written notice.

# 2014

### PROVINCE CONSULTS

The Province of BC began its consultation on the CRT this spring with seven public consultation workshops across the Basin. There will be more opportunities in the fall for residents to join the consultation and ensure any decisions on the future of the CRT reflect local values and interests. While no decision has been made on the future of the CRT, both countries are conducting studies and exploring their options.

[www.gov.bc.ca/columbiarivertreaty](http://www.gov.bc.ca/columbiarivertreaty)

### GET EDUCATED

Check out interactive photos that allow you to see changes to the landscape caused by flooding, watch short videos that reflect Basin residents' opinions, explore the timeline and subscribe to email updates.

[www.cbt.org/crt](http://www.cbt.org/crt)

### LOCAL GOVERNMENTS' COMMITTEE

Elected officials from across the Basin are working together to help Basin residents and local governments engage in decisions around the future of the CRT.

[www.cbt.org/lgcommittee](http://www.cbt.org/lgcommittee)

### Stay @ Home!

Take our new online tutorial; in 15 minutes you can get a basic understanding of the CRT. When you're ready to deepen your understanding, try our 25-minute tutorial. Then test your knowledge with our online quiz.

[www.cbt.org/crttutorial](http://www.cbt.org/crttutorial)



Join the conversation on Twitter: #crtreaty.

Columbia River Treaty  
Learn about our past.  
Think about our future.

# CBT Charter: The Foundation of Our Work

## Explore the Basin's History

Early explorers relied on the Columbia River for transportation; as a result, the river became a corridor for human settlement. Visit our new Basin History web pages and learn about the Basin's geography and the history of its people, plus how the Columbia River Treaty and hydro development in the region have transformed the Basin.

[www.cbt.org/basinhistory](http://www.cbt.org/basinhistory)



The elements of our *Charter*, and their importance to Basin residents, are fundamental to CBT and serve to guide all our long-term activities.

[www.cbt.org/charter](http://www.cbt.org/charter)



Plowing the fields at the Firwood Farm, Howser, Duncan Lake, 1912.

## Strengthening Rural Communities

With a focus on strengthening rural communities in the Columbia Basin Boundary region, the Columbia Basin Rural Development Institute (RDI) is a regional centre of excellence that will provide region-specific information and perform applied research. The RDI is supported through a partnership between CBT and Selkirk College.

Building on CBT's State of the Basin initiative, the RDI will be delivering an updated *State of the Basin Report*, which will provide data relating to economic,

social, cultural, environmental and other community-related aspects that affect well-being within the region.

The RDI website has been launched and will provide an online resource where residents can learn about trends, view reports and interact with data in order to inform decision making.

To receive reports and updates, subscribe to the RDI e-newsletter.

[www.cbrdi.ca](http://www.cbrdi.ca)

### State of the Basin Research Areas



# Investing on Behalf of Basin Residents

**CBT's Investment Program prudently invests the \$321-million endowment it received from the provincial government in 1995 in order to deliver long-term benefits to the residents of the Basin.**

The program currently invests in power projects, Basin-based businesses, real estate and market securities. These investments generate a predictable, sustainable and appreciating income stream to fund current and future Delivery of Benefits activities and cover corporate operating expenses.

In addition to providing financial benefits, many of our investments promote social, economic and environmental well-being.

[www.cbt.org/investments](http://www.cbt.org/investments)



## A TASTE OF EUROPE IN VALEMOUNT

Valemount Swiss Bakery is a small artisan bakery tucked in a remote mountain village. When Silvia Jungo and Bogdan Wasaznik were passing through as tourists, they were excited to come across it by chance, as Wasaznik was a baker and pastry chef by trade—with experience in both Canada and Europe—and dreamed of one day owning his own bakery. By coincidence, the then-owner of the bakery was wishing to retire and sell his business. Thanks to financing obtained through CBT, Jungo, with Wasaznik alongside her, is now the proud new owner of Valemount Swiss Bakery.

Silvia Jungo, Owner, Valemount Swiss Bakery.

[www.valemountswissbakery.com](http://www.valemountswissbakery.com)

“We discovered it by coincidence, but it was somehow meant to be. We started running Valemount Swiss Bakery with a rent-to-own agreement in July 2010, and turned to CBT to get the financing in order to purchase it. CBT was able to help a small business with little background, and I purchased the bakery as of May 31, 2012.”

SILVIA JUNGO, OWNER, VALEMOUNT SWISS BAKERY

# One Investment Helps Another

**The benefits of CBT investing in Basin businesses are two-fold.** First, these investments help CBT generate an income that allows us to deliver benefits to the Basin. Second, Basin businesses are able to grow thanks to financing solutions that meet their needs.

Priority Concrete Pumping Ltd., based out of Nelson, is no exception. When Mike Schoonhoven wanted to expand his business, which required the purchase of new concrete pumping equipment, he was able to get financing through CBT. Priority now operates the largest boom pump in eastern BC, with a massive reach of 50 metres.

What's unique about this deal, though, is that there's a third benefit: Priority Concrete's new equipment is being used for the construction of the Waneta Expansion Project, in which CBT is a partner. So while Schoonhoven and his team are helping build the project—the largest one they have ever worked on—the project is also providing work to local businesses and creating hundreds of local jobs.

[www.priorityconcrete.com](http://www.priorityconcrete.com)

“Working with CBT has been a great experience, and we have developed an excellent relationship while helping build green energy projects together and investing back into our local communities.”

MIKE SCHOONHOVEN, OWNER, PRIORITY CONCRETE PUMPING LTD.



Priority Concrete Pumping operates the largest boom pump in eastern BC.

## Cranbrook's First BuiltGreen Multi-family Housing Complex

Homeowners in Cranbrook now have more options to choose from thanks to Fisher Peak Townhomes, a new multi-family housing complex. Built by New Dawn Developments, the complex presented a solid investment opportunity to CBT and we were pleased to become a partner in the project. In July 2011, construction began on these entry-level townhomes, which are being built to BuiltGreen Platinum standards through the use of resource-efficient, environmentally friendly construction practices and products.

[www.cbt.org/fisherpeak](http://www.cbt.org/fisherpeak)

Fisher Peak Townhomes, the first BuiltGreen multi-family housing complex in Cranbrook.



## BREAKING GROUND FOR NEW RESIDENTIAL CARE BEDS

Thirty-five new residential care beds are expected to be ready by early 2013 at Columbia Garden Village in Invermere. Our investment in seniors housing facilities provides positive, long-term value to our investment portfolio, while addressing the need for quality housing for seniors. Columbia Garden Village is one of eight projects built as a partnership between CBT and Golden Life Management, which have created a total of 838 living suites for seniors in communities across the Basin.

[www.cbt.org/columbiagarden](http://www.cbt.org/columbiagarden)

Left to right: Gerry Taft, Mayor, District of Invermere; Wendy Booth, CBT Board member; Betty Eacrett, Columbia Garden Village resident; Celeste Mullin, COO, Golden Life; David Goldsmith, Interior Health Board member.

CBT invests in opportunities like power projects and Basin businesses in order to generate a predictable, sustainable and appreciating income stream. In addition to providing financial benefits, many of our investments promote social, economic and environmental well-being.

# Waneta Expansion Brings Long-term Investment



The Waneta Expansion Project is one of four hydroelectric projects that CBT has invested in. CBT also partners with Columbia Power Corporation in Arrow Lakes Generating Station, Brilliant Dam and Brilliant Expansion.

Right here in our region is one of the largest hydroelectric projects currently under construction in BC. The \$900-million Waneta Expansion Project, located near Trail, creates a unique opportunity to obtain large amounts of clean hydroelectric energy without building a new dam. The project will see the creation of a second powerhouse that will share the hydraulic head created by the existing Waneta Dam (owned by Teck and BC Hydro).

Construction has progressed well since it began in the fall of 2010. The project is within budget and on schedule, with completion expected by May 2015.

The project partners—Fortis Inc., Columbia Power Corporation and CBT—were pleased to announce several milestones over the past year. These include:

- \$94 million spent on goods and services at local businesses;
- over 300 people working directly on the project, with a local hire rate of over 80 per cent and equity hiring provisions in place for women, persons with disabilities, First Nations and/or visible minorities;

# 300+

people are working directly on the project.

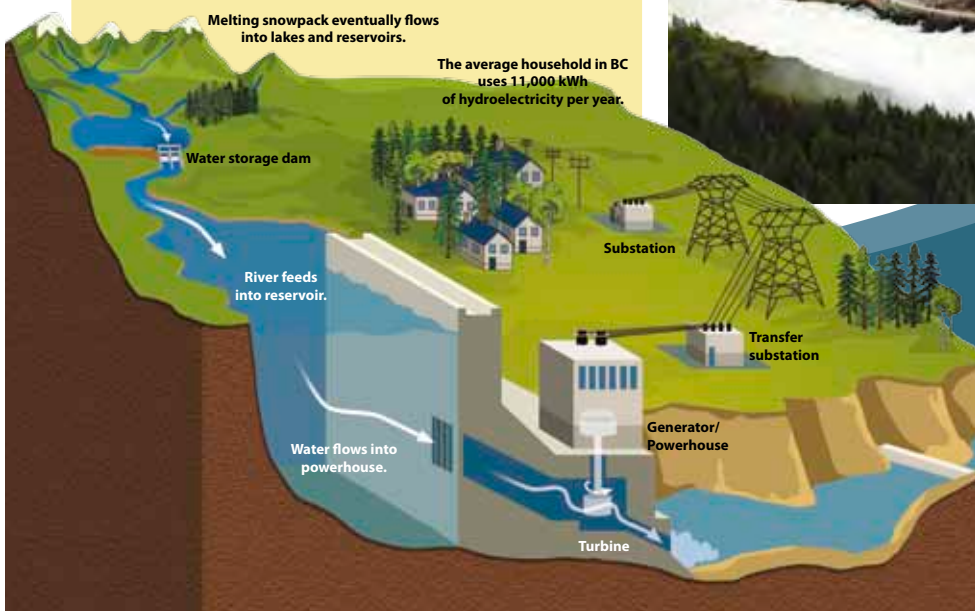
- a survey that determined that 25 per cent of the workers on the site either moved back to the Kootenays or relocated to the area, while 60 per cent were able to remain at home in the Kootenays with their families while working on the project;
- construction of a public viewing area across from the project site, which allows interested members of the public to remain safe;
- the completion of powerhouse excavation, which meant construction of the powerhouse could begin, and the completion of intake and tunnel excavation, which meant work on the concrete linings in the tunnels could begin;
- no major environmental incidents and an injury rate approximately 10 times lower than the industry average, which demonstrates the project's dedication to high standards of safety, environmental protection and quality workmanship;
- the continuation of the socio-economic monitoring program, which ensures the impacts to the area are documented and available to the public ([www.columbiapower.org/SEM2011](http://www.columbiapower.org/SEM2011)); and
- monthly meetings of a Community Impact Management Committee, which provides ongoing support to encourage positive community impacts and benefits, and relays community concerns resulting from the construction of the project.

[www.columbiapower.org/wanetaexpansion](http://www.columbiapower.org/wanetaexpansion)



## HOW DOES A DAM GENERATE POWER?

1. Water flows into a generating facility, also known as a powerhouse, where energy from the water is converted into hydroelectricity.
2. A tube known as a penstock carries water to the turbine.
3. The water spins large turbine blades.
4. The spinning turbine blades rotate a turbine shaft.
5. The shaft is connected to a generator that spins.
6. The generator rotates and converts mechanical energy into electrical energy.
7. Water flows back into the river and continues downstream, where it may repeat this cycle many times.



# Strengthening Our Foundation Together

Columbia Basin Trust works with residents of the Basin to strengthen the well-being of the region. We bring together people, groups, communities and governments, encouraging collaboration and partnerships in order to identify and address local priorities. We also partner with many organizations that have similar goals and complementary strengths.

CBT's achievements are a testament to the contributions of our dedicated partners, advisory committees, staff and Board members, who help strengthen our foundation to increase our support and impact in Basin communities. Their passion and dedication to this organization, and to the people of this region, are helping create a lasting legacy in the Basin.

Congratulations to all of the community organizations, local governments, non-profits and project partners on making a positive impact in the Basin, and thank you to all Basin residents for all that you do in our communities to advance community well-being.



## Columbia Basin Trust Region [www.cbt.org/map](http://www.cbt.org/map)



## Share Your View

We are always looking for feedback on this report and our work in communities around the Basin.

Contact us at 1.800.505.8998  
or [cbt@cbt.org](mailto:cbt@cbt.org).

[www.cbt.org/contact](http://www.cbt.org/contact)

## Connect With Us

Follow CBT using some of your favourite social media tools.

[www.facebook.com/ColumbiaBasinTrust](https://www.facebook.com/ColumbiaBasinTrust)

[www.twitter.com/cbtinfo](https://www.twitter.com/cbtinfo)

Subscribe to *BASINLink*, CBT's monthly electronic newsletter.

[www.cbt.org/newsletter](http://www.cbt.org/newsletter)

Printed in Canada. Design by [www.frolixdesign.com](http://www.frolixdesign.com).

[www.cbt.org](http://www.cbt.org)



HEAD OFFICE/SOUTHWEST BASIN  
Suite 300, 445 – 13th Avenue  
Castlegar, BC V1N 1G1

1.800.505.8998 / 250.365.6633  
[cbt@cbt.org](mailto:cbt@cbt.org)

NORTHEAST BASIN OFFICE  
512 – 8th Avenue North  
Golden, BC V0A 1H0

1.800.505.8998 / 250.344.7065  
[golden@cbt.org](mailto:golden@cbt.org)

NORTHWEST BASIN OFFICE  
Box 220, 220 Broadway  
Nakusp, BC V0G 1R0

1.800.505.8998 / 250.265.9936  
[nakusp@cbt.org](mailto:nakusp@cbt.org)

SOUTHEAST BASIN OFFICE  
828D Baker Street  
Cranbrook, BC V1C 1A2

1.800.505.8998 / 250.426.8810  
[cranbrook@cbt.org](mailto:cranbrook@cbt.org)